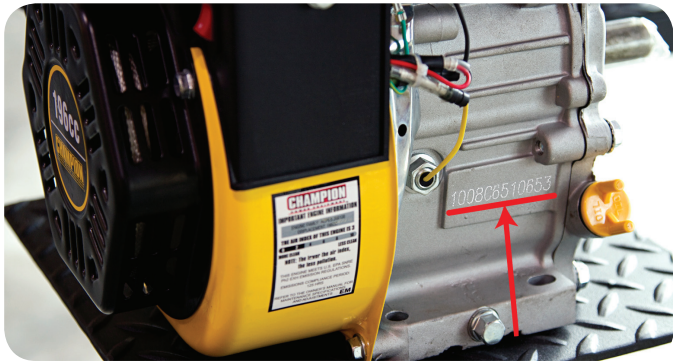


Engine Date of Manufacture (DOM) (pre-2011 engines)

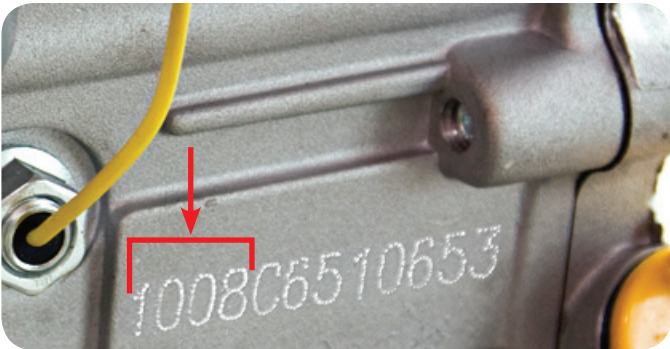
This bulletin covers the following Champion Power Equipment models (*Note: Read instructions completely before performing service*):

- **All Champion Power Equipment products equipped with gasoline powered engines.**

- 1) Make sure your engine is turned OFF, and has cooled sufficiently to allow handling.
- 2) Locate the engraved serial number on the side of the crank case.



- 3) The Date of Manufacture (DOM) indicator may be found within the engines serial number. Locate first four digits (all numbers) of serial number.



- 4) You may decipher the engine DOM as follows:

- First two digits = Year
- Second two digits = Month

Example: 1008 = August 2010

If you have any questions, please contact us at:

Champion Power Equipment, Inc.

Customer Service

10006 Santa Fe Springs Rd.
Santa Fe Springs, CA 90670
www.championpowerequipment.com

Technical Service

Mon – Fri 8:30 AM – 5:00 PM (PST/PDT)
Toll Free: 1 (877) 338-0999
tech@championpowerequipment.com