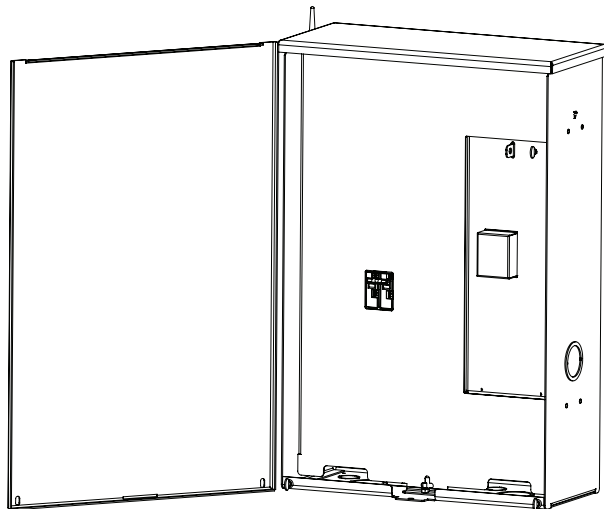




Champion Power Equipment, Inc.

**MODEL #102008**



## **PARTS INFORMATION**

**150A AUTOMATIC TRANSFER SWITCH WITH aXis CONTROLLER®**

**SERIAL NUMBER RANGE: ALL**



To order replacement parts please visit:  
**[shop.championpowerequipment.com](http://shop.championpowerequipment.com)**  
or call **1-877-338-0999**.

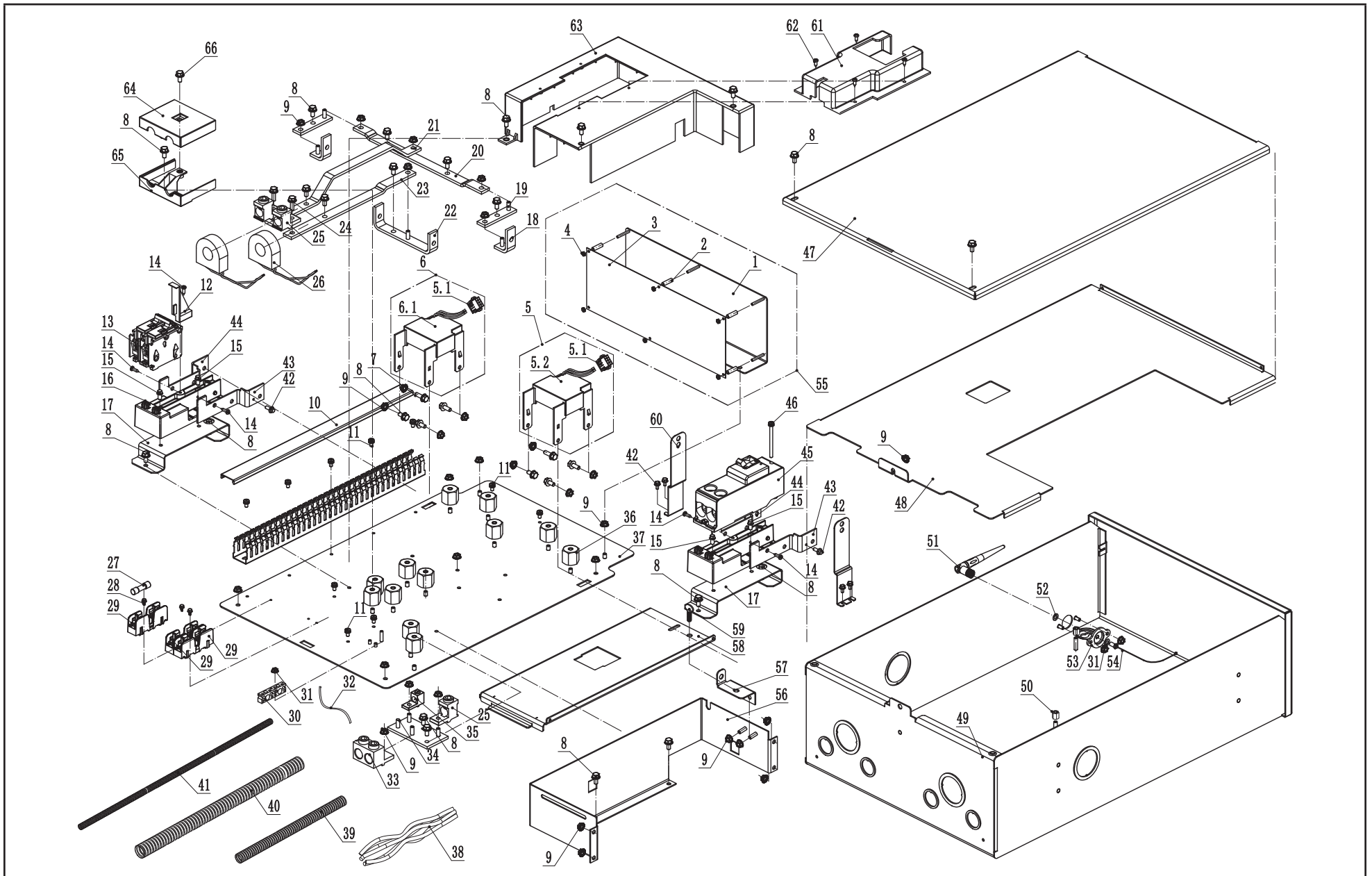
## **TABLE OF CONTENTS**

**Parts Diagram** ..... **3**

**Parts List** ..... **4**

**Wiring Diagram** ..... **6**

# PARTS DIAGRAM



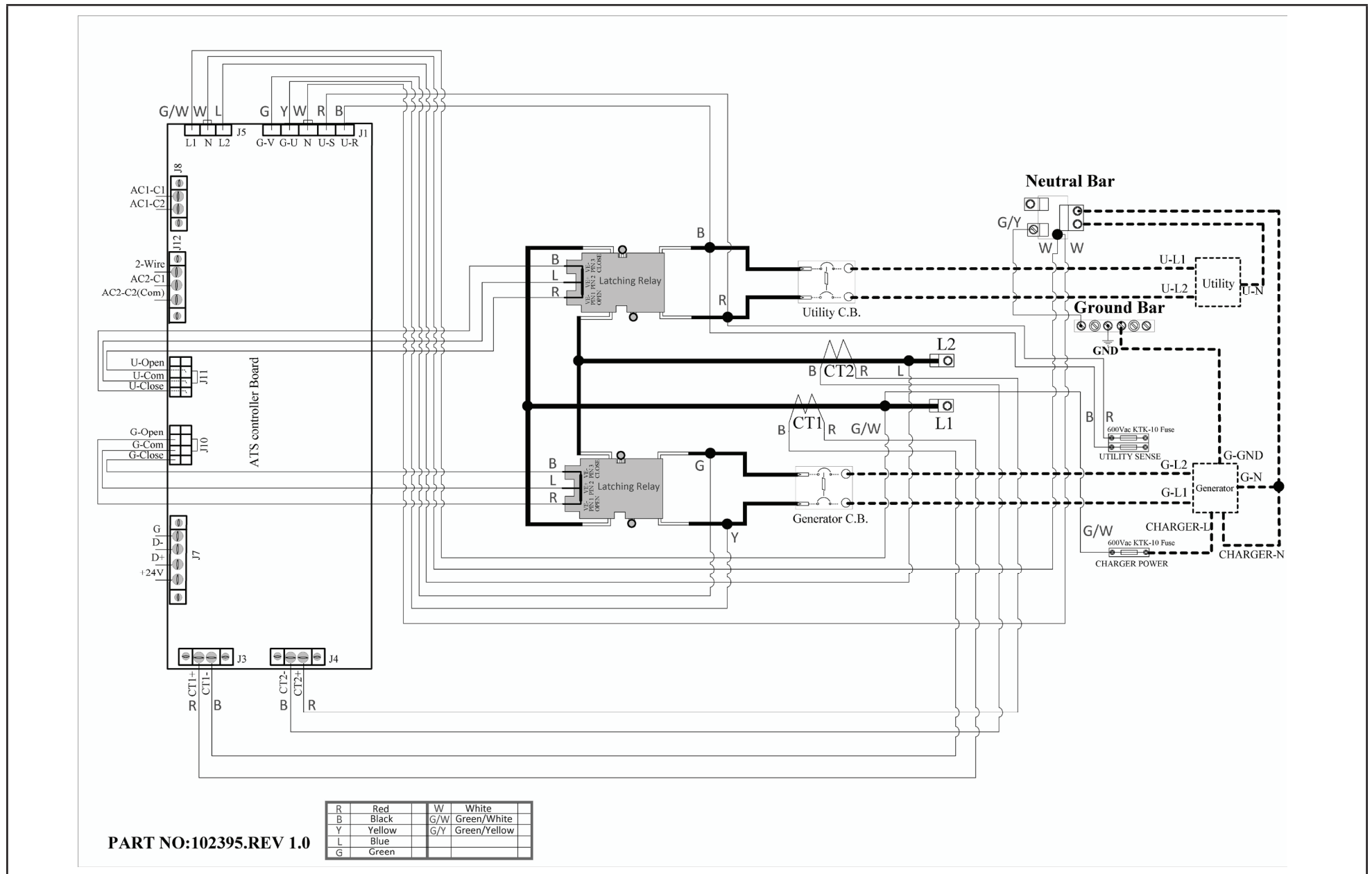
## PARTS LIST

#	Part Number	Description	Qty.
1	165.216300.01	Bracket, PCB	1
2	2.13.032	Spacer, Standoff Nylon, $\phi 4.5 \times \phi 6.5 \times 18$	6
3	165.216002.00	PCB	1
4	1.6177.04	Nut M4	6
5	5.1270.002.2	Relay, Latching Assembly, Utility, 340 mm	1
5.1	5.1620.005	Connector, 4 x 2 8 pin	2
5.2	5.1270.002.2.0	Relay, Latching + Wiring, Utility, 340 mm	1
6	5.1270.002.1	Relay, Latching 200A Assembly, Generator, 210 mm	1
6.1	5.1270.002.1.0	Relay, Latching 200A + Wiring, Generator, 210 mm	1
7	1.5789.0615.6	Flange Bolt M6 x 15	4
8	1.5789.0612.6	Flange Bolt M6 x 12	26
9	1.6177.1.06.6	Nut M6, Flange	25
10	165.216008.00	Duct, Wiring	1
11	1.9074.4.0414.7	Screw/Washer Assembly M4 x 14	10
12	165.216600.00	Pressing Plate	1
13	5.1242.9100	100 Amp Circuit Breaker, 10000	1
14	1.845.4216	Screw, ST4.2 x 16	5
15	1.16674.0612	Flange Bolt M6 x 12	4
16	165.216006.00	Base, Circuit Breaker Mount	2
17	165.216300.00	Bracket, Circuit Breaker Base Mount	2
18	165.216400.01	Bar, Bus (1)	2
19	165.216400.03	Bar, Bus (3)	2
20	165.216400.04	Bar, Bus (4)	1
21	165.216400.05	Bar, Bus (5)	1
22	165.216400.02	Bar, Bus (2)	1
23	165.216400.06	Bar, Bus (6)	1
24	1.5789.0620.6	Flange Bolt M6 x 20	2
25	165.216004.00	Lug, Solderless	3

#	Part Number	Description	Qty.
26	165.210200.01.1	Transformer, Current	2
27	5.1280.013	Fuse, KTK	1
28	1.823.0408	Screw M4 x 8	3
29	165.216007.00	Fuse Block	3
30	165.216004.03	Lug, Gound Neutral	1
31	1.6177.1.05	Nut M5, Flange	3
32	5.1900.148	Grounding Line, 80mm	1
33	165.216004.01	Lug, 2 Conductor	1
34	165.216500.00	Bar, Bus Neutral Wiring	1
35	165.216004.02	Lug, Neutral Bonding	1
36	165.216005.00	Standoff, Glastic M6 x 25.4	12
37	165.216200.00	Subplate Assembly, 200A ATS	1
38	102006.21.10	Wire Assembly	1
39	5.1320.007	Conduit, Plastic, 470 mm, CSA	1
40	5.1320.035	Conduit, Plastic, 850 mm, CSA	1
41	5.1320.010	Conduit, Plastic, 1300mm, CSA	1
42	1.16674.0512.6	Flange Bolt M5 x 12	8
43	165.216003.02	Bar, Bus Circuit Breaker, Right	2
44	165.216003.01	Bar, Bus Circuit Breaker, Left	2
45	5.1242.9150	150 Amp Circuit Breaker	1
46	2.08.176	Screw ST3.9 x 69	1
47	165.216100.04.24	Enclosure, Cover 200A ATS, 150A	1
48	165.216001.05.24	Enclosure, Dead Front 200A ATS	1
49	165.216100.00.24	Enclosure Assembly, Base 200A ATS	1
50	2.02.038	Nut M6 x 12	5
51	5.1880.002	Antenna, Wifi Module	1
52	2.03.071	Washer ( $\phi 6 \times \phi 12 \times 0.5$ )	2
53	5.1891.001	Isolator, Wifi Antenna	1
54	5.1890.001	Transconnection	1
55	165.216700.00	PCB Assembly	1

#	Part Number	Description	Qty.
56	165.216300.02	Bracket Assembly, Sub Plate	1
57	165.216300.03	Bracket, Support Supply Auth	1
58	165.216001.07.24	Cover Assembly, Dead Front	1
59	2.08.144	Bolt M6×12	1
60	165.216009.04	Circuit Breaker Bracket	2
61	165.216013.01	Cover Plate (Bar, Bus)	1
62	1.845.4295	Screw, ST4.2×9.5	4
63	165.216013.02	Cover Plate (Relay)	1
64	165.216013.03	Cover Plate (Lug, Up)	1
65	165.216013.04	Cover Plate (Lug, Down)	1
66	1.5789.0608.6	Flange Bolt M6×8	1

# WIRING DIAGRAM



PART NO:102395.REV 1.0

R	Red	W	White
B	Black	G/W	Green/White
Y	Yellow	G/Y	Green/Yellow
L	Blue		
G	Green		