



MODEL #BD201045



PARTS INFORMATION

2300W PORTABLE INVERTER GENERATOR

SERIAL NUMBER RANGE: ALL

An icon depicting a person wearing a headset and holding a wrench, with an arrow pointing to a box, symbolizing customer support or parts ordering.

To order replacement parts please visit:
black-diamond.com
or call **1-888-373-8272**.

TABLE OF CONTENTS

Inverter Generator Diagram	3
Inverter Generator Parts List	4
Engine Diagram	6
Engine Parts List	7
Cylinder Head Diagram	9
Cylinder Head Parts List	10
Carburetor Diagram	11
Carburetor Parts List	12
Base Kit Diagram	13
Base Kit Parts List	14
Fuel Tank Diagram	15
Fuel Tank Parts List	16
Control Panel Diagram	17
Control Panel Parts List	18
Wiring Diagram	19

INVERTER GENERATOR DIAGRAM

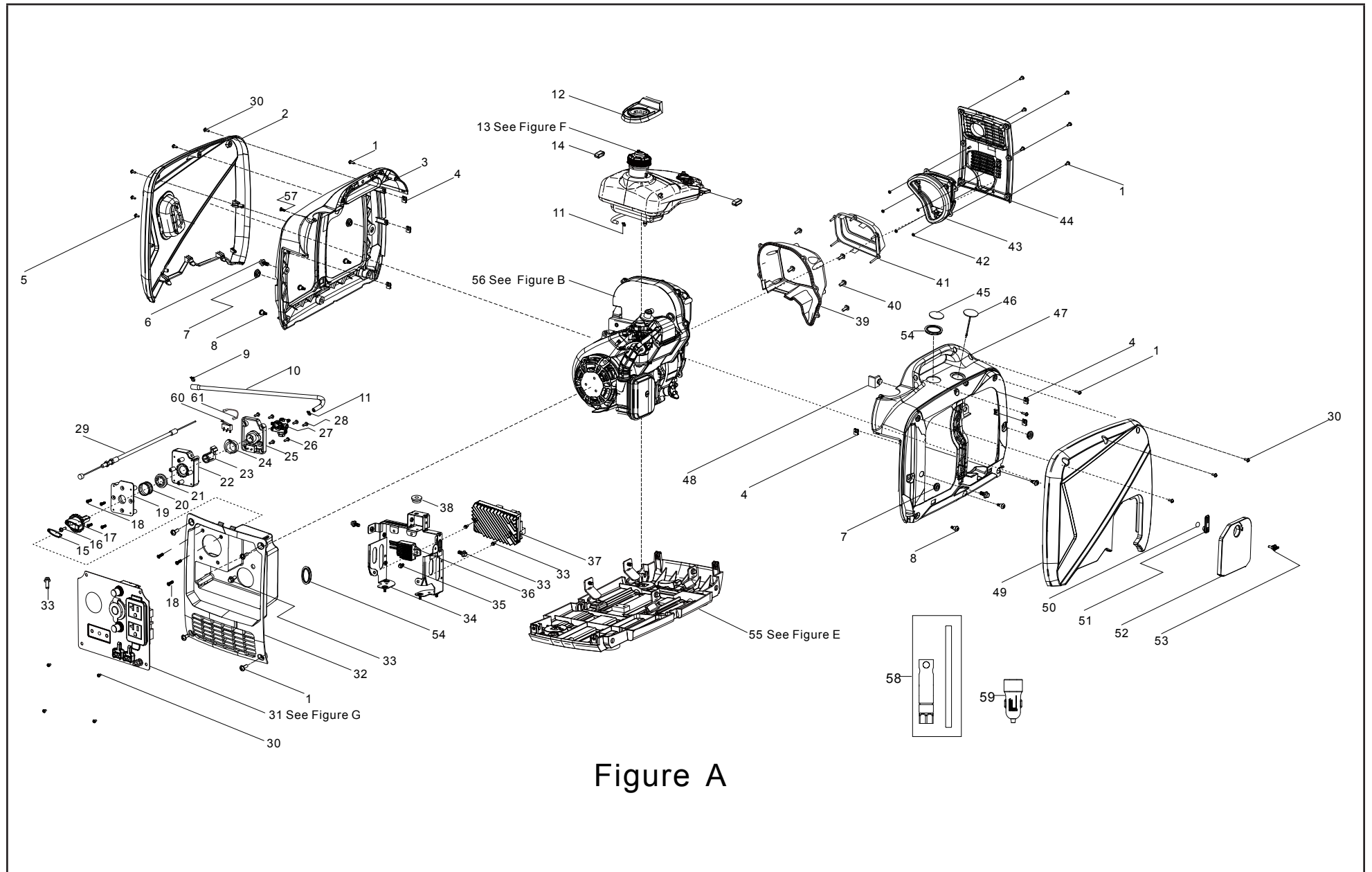


Figure A

INVERTER GENERATOR PARTS LIST

#	Part Number	Description	Qty.
1	90255-0516-53A0	Screw & Washer Assembly, M5 x 16, Black Zinc	13
2	80092HYHX0110-Q200	Cover Board, Left	1
3	80091-Y5V0120-Q202	Shell, Left	1
4	17199-Y2V0110-00A0	Clip Nut, M5 White Zinc	6
5	90103-0508-53A0	Cross Recess Pan Head Screw, M5 x 8, Black Zinc	2
6	90007-0612-A1A0	Hexagon Flange Bolt, M6 x 12, White Zinc	2
7	16601-Y2V0210-0001	Vibration Mount 2, Fuel Tank	4
8	90208-Y2V0110-00A0	Hexagonal Step Bolt	6
9	90685-D095-0EA0	Clamp, Ø9.5 x 0.8 x 8, Army Green Zinc	1
10	90686HY2V0110-00M0	Fuel Tube, Ø4.5×Ø8.5×(17.5+6.5+200)	1
11	90685-D085-0EA0	Clamp, Ø8.5 x 8 x 0.6, Army Green Zinc	2
12	16641-Y2V0110-0001	Rubber Sleeve, Filling Fuel Hole	1
13	96003-ZSS9210-0000	Fuel Tank Assembly - See Figure F	1
14	90683-Y2V0110-0001	Bushing	2
15	35674-YHX0110-R9A0	Gap, Knob	1
16	90103-0416-51A0	Cross Recess Pan Head Screw, M4 x 16 White Zinc	1
17	35643-YHX0110-Q2A0	Knob, Switch Dial, Engine	1
18	90129-0416-01A0	Self Tapping Screw, ST4.2×16, White Zinc	8
19	16265-YHX0110-Q200	Support Plate 1	1
20	28224-YHX0110-00A0	Compression Spring	1
21	16265-YHX0210-Q200	Support Plate 2	1
22	35021-YHX0110-0000	Control Enclosure	1
23	16144-YHX0210-0000	Stop block, Choke Pull 1	1
24	16144-YHX0110-0000	Stop block, Choke Pull 2	1
25	50132HYHX0110-0000	Bracket, Switch	1
26	90107-0413-03A0	Self Tapping Screw, ST4.2×13, Black Zinc	4
27	16750-YJ10110-0000	Switch, Fuel	1
28	90255-0410-51A0	Screw & Washer Assembly, M4×10, White Zinc	2

#	Part Number	Description	Qty.
29	16080-YHX0110-0000	Choke Handle Subassembly	1
30	90255-0512-53A0	Screw & Washer Assembly, M5×12 Black Zinc	10
31	35610-YHX0310-H700	Control Panel Assembly - See Figure G	1
32	35680HYHX0110-Q200	Seat, Panel	1
33	90001-0612-01A0	Hexagon Flange Bolt, M6 x 16, White Zinc	6
34	30081-YHX0110-0000	Bracket, Inverter	1
35	90001-0616-01A0	Hexagon Flange Bolt, M6 x 16, White Zinc	1
36	30060-YHY0110-0000	Rectifier	1
37	30043-YHY0210-0000	Inverter	1
38	16601-Y2V0110-0001	Vibration Mount, Fuel Tank	1
39	18109-Z800110-0001	Cover, Muffler	1
40	90107-0516-01A0	Self Tapping Screw, ST4.8×9.5, White Zinc	5
41	18002-Z800110-0001	Louver, Muffler	1
42	37073-Y2V0110-00A0	Clip, Spring	5
43	53202-Y2V0110-0001	Rubber Sleeve, Connector	1
44	18002-Y2V0210-Q202	Louver, Muffler	1
45	37205-Y2V0310-00A1	Fuel Level View, Fuel Gauge	1
46	30431-Y2V0110-0001	Rubber Sleeve	1
47	80095-Y5V0120-Q202	Shell, Right	1
48	50033-Y2V0110-0001	Cushion Rubber	1
49	80096HYHX0110-Q200	Cover Board, Right	1
50	37073-Y2V0110-00A0	Clip, Spring	1
51	24329-YCF0110-Q201	Block 2	1
52	51197HYHX0111-Q200	Side Access Panel, Service	1
53	80105-YB00110-Q201	Access Panel Knobs	1
54	30431-Y2V0310-0001	Rubber Sleeve	2
55	96003-ZSS9310-0000	Mounting Plate Assembly, Engine - See Figure E	1
56	R80MI0000FOA-CMP00	Engine - See Figure B	1
57	90124-Y9T0310-00A0	Tapping Screw, PT4.2×13	1
58	93130-YHY0110-0100	Spark Plug Socket	1

#	Part Number	Description	Qty.
59	35613-YBE0210-0000	12VDC USB Adapter	1
60	35190-Y2V0110-0000	Micro Switch	1
61	35191-YHY0210-0000	Harness, Micro Switch	1

ENGINE DIAGRAM

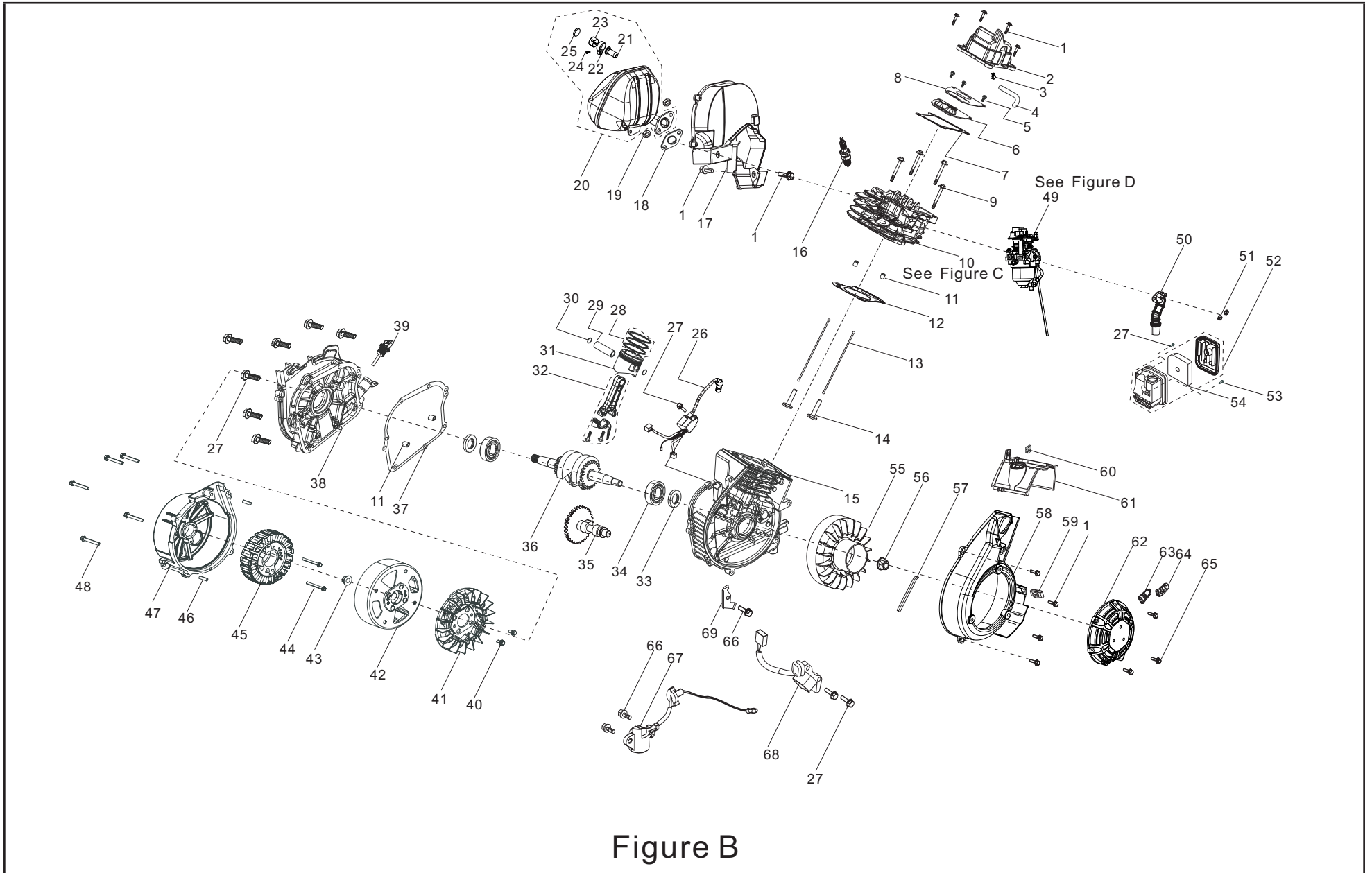


Figure B

ENGINE PARTS LIST

#	Part Number	Description	Qty.
1	90007-0616-A1A0	Hexagon Flange Bolt, M6 x 16, White Zinc	10
2	12410-Z800210-00A0	Cylinder Head Cover Subassembly	1
3	90685-Z030110-0000	Clamp, Ø10.5	1
4	17004-Z800110-00A0	Tube, Breather	1
5	90103-0308-51A0	Cross Recess Pan Head Screw, M3x8, White Zinc	3
6	11320-Z800110-00A0	Assembly, Breather	1
7	12004-Z800120-0000	Cylinder Head Cover Gasket	1
8	11332-Z800110-00A0	Gasket, Breather Groove Cover	1
9	12003-Z800110-00A0	Cylinder Head Bolt, M6 x 50, White Zinc	4
10	96003-ZSS9010-0000	Cylinder Head - See Figure C	1
11	90502-0812-00A0	Pin, Ø8 x 12	4
12	12131-Z800110-0000	Cylinder Head Gasket	1
13	14070-Z800110-00A0	Valve Lifter	2
14	14081-Z800110-00A0	Valve Tappet	2
15	11310-Z800110-00A0	Crankcase Subassembly	1
16	30010-Z350210-00A0	Spark Plug, F6RTC	1
17	18013HZ800110-00A0	Muffler cover	1
18	18001-Z800110-00A0	Exhaust Outlet Gasket	1
19	90303-0600-31A0	Hexagon Nut, M6, White Zinc	2
20	18100-Z800210-00A1	Muffler Assembly	1
21	18250-Z800210-0000	Spark Arrestor	1
22	90740-Z800210-0000	Clamp, Ø26	1
23	18213-Z800210-0000	Cover Plate, Spark Arrestor	1
24	18012-Z800210-0000	Bolt, M5 x 25, Spark Arrestor	1
25	18218-Z800210-0000	Muffling Block	1
26	30700-Z800310-00A0	Igniter	1
	S/N<21MAY0600001		
	30700-Z800610-0000		
	S/N≥21MAY0600001		

#	Part Number	Description	Qty.
27	90007-0620-A1A0	Hexagon Flange Bolt, M6 x 20, White Zinc	11
28	13200-Z800110-00A0	Piston Ring Assembly	1
29	13121-Z800120-00A0	Piston Pin, Ø11 x Ø37	1
30	13122-Z800120-00A0	Piston Pin Clip	2
31	13111-Z800110-00A0	Piston	1
32	13010-Z800110-00A0	Connecting Rod	1
33	90682-Z800110-00A0	Oil Seal, Ø20 x Ø35 x 5	2
34	90547-0204-00	Bearing	2
35	14200-Z800110-00A0	Camshaft Assembly	1
36	13300-Z800110-00A0	Crankshaft Assembly	1
37	11001-Z800110-00A0	Crankcase Gasket	1
38	11411-Z800210-00A0	Crankcase Cover	1
39	15010-Z800131-Q200	Oil Dipstick Subassembly	1
40	90001-0610-01A0	Flange Bolt, M6 x 10, Blue White Zinc	2
41	19352-Y2V0110-Q2A0	Engine Fan	1
42	30110-Y2V0130-0000	Rotor Component	1
43	90306-1200-31A0	Hexagon Flange Nut, M5, White Zinc	1
44	90001-0535-01A0	Hexagon Flange Bolt, M5 x 35, White Zinc	2
45	30120-YHX0110-0000	Stator Component, Ø120 x 21	1
46	90502-0814-00A0	Pin, Ø8 x 14	2
47	30024-Y2V0210-00A0	Shroud, Motor	1
48	90001-0630-01A0	Hexagon Flange Bolt, M6 x 30, White Zinc	5
49	96003-ZSS9110-0000	Carburetor-See Figure D	1
50	17110-Z800110-00A0	Inlet Pipe Assembly, Air Cleaner	1
51	90305-0600-31A0	Hexagon Flange Nut, M6, Black Zinc	2
52	17100-Z800110-00A0	Air Cleaner	1
53	90007-0520-A1A0	Hexagon Flange Bolt, M5 x 20	1
54	17151-Z800110-00A0	Element, Air Cleaner	1
55	13510-Z800410-00A0	Flywheel Subassembly	1
56	13501-Z510110-00A0	Flywheel Nut, M12 x 1.25, White Zinc	1

#	Part Number	Description	Qty.
57	19081-Z800110-00A0	Sealing Strip, Shroud	1
58	28110-Z800110-Q200	Shroud	
59	17199-Y2V0110-00A0	Clip Nut, M5	1
60	90804-Z800210-0000	Stop Block	1
61	12014-Z800110-00A0	Guide plate, Cylinder Head	1
62	28200-Z800110-Q200	Recoil Starter Assembly	1
63	28004-YHX0110-Q200	Guide Plate Assembly, Starter Rope	1
64	28210-YEB0110-R900	Handle, Starter Rope	1
65	90007-0612-A1	Hexagon Flange Bolt 1, M6 x 12, White Zinc	3
66	90007-0612-A1A0	Hexagon Flange Bolt 2, M6 x 12, White Zinc	3
67	37060-Z800110-00A0	Engine oil Sensor, W/O Nut	1
	S/N<21MAY0600001		
	37060-Z800210-0000		
	S/N≥21MAY0600001		
68	30400-Z2X0210-0000	Ignition Coil	1
69	54066-Z800110-00A0	Wiring plate, Engine oil Sensor	1

CYLINDER HEAD DIAGRAM

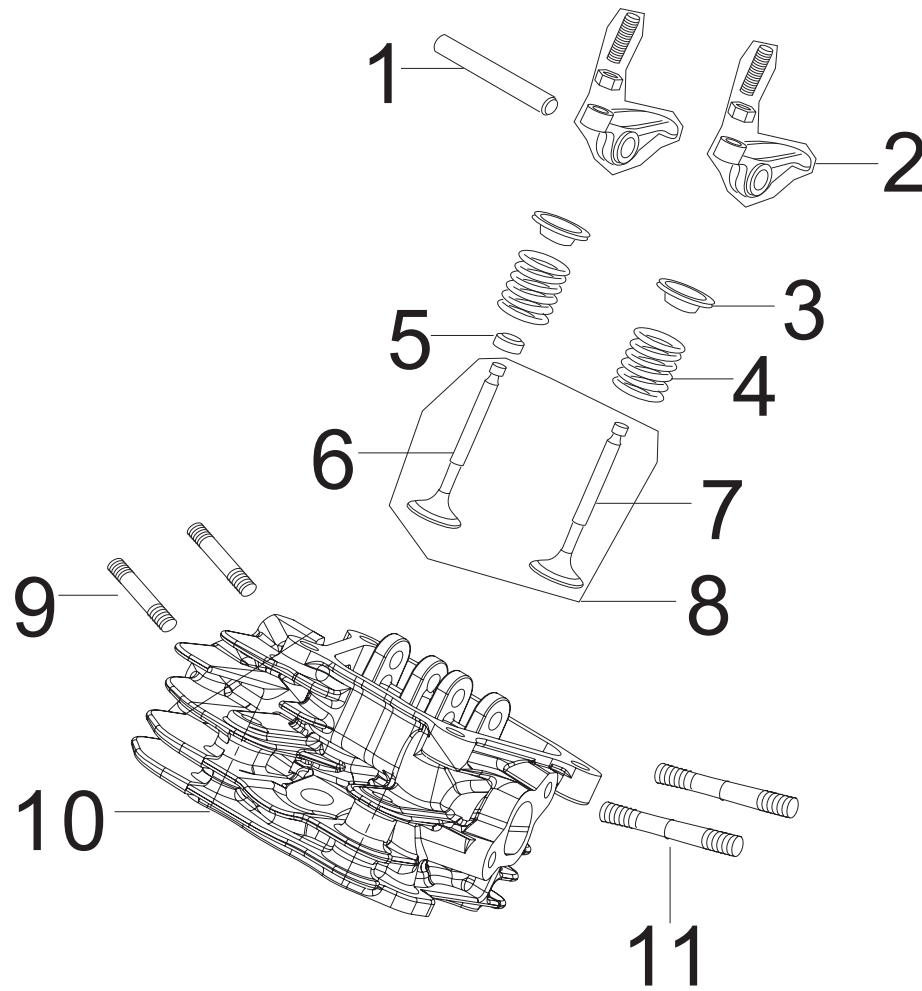


Figure C

CYLINDER HEAD PARTS LIST

#	Part Number	Description	Qty.
1	14330-Z800110-00A0	Valve Rocker Subassembly	1
2	14310-Z800110-00A0	Valve Rocker Subassembly	2
3	12112-Z800110-00A0	Valve Spring Retainer	2
4	12103-Z800110-00A0	Valve Spring	2
5	12101-Z800110-00A0	Seal Guide	1
6	12111-Z800110-0000	Inlet Valve	1
7	12121-Z800110-0000	Exhaust Valve	1
8	12110-Z800110-00A0	Valve Set	1
9	90204-Z800210-00A0	Stud, M6 x 25.5	2
10	12140-Z800210-00A0	Cylinder Head Subassembly	1
11	90204-Z800110-00A0	Stud, M6 x 88, Blue White Zinc	2

CARBURETOR DIAGRAM

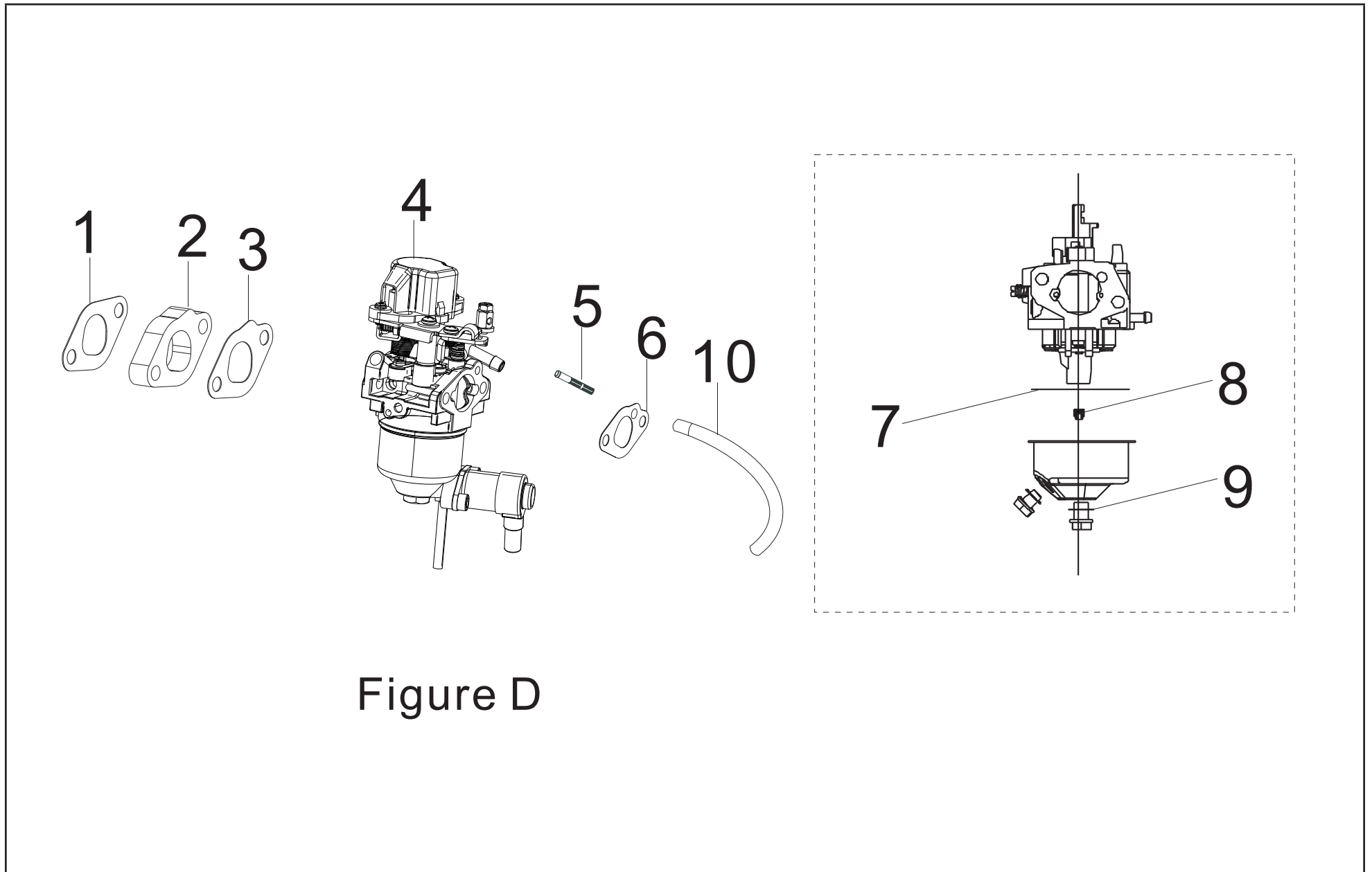


Figure D

CARBURETOR PARTS LIST

#	Part Number	Description	Qty.
1	16002-Z800110-00A0	Carburetor Insulator Gasket	1
2	16003-Z800110-00A0	Carburetor Insulator Plate	1
3	16001-Z800110-00A0	Carburetor Gasket	1
4	16100-Z801610-00A0	Carburetor Assembly	1
5	16652-Z800110-00A0	Fuel Filter	1
6	17001-Z800110-00A0	Air Cleaner Gasket	1
7	16112-Z800210-00A0	Seal Ring, Float	1
8	16161-Z150810-00A0	Jet, Carburetor, #67	1
	16161-Z150710-00A0	Jet, Carburetor, #66	/
	16161-Z150610-00A0	Jet, Carburetor, #65	/
9	90681-Z3G0110-00A0	Seal Ring	1
10	90686-Y2V0210-00A0	Fuel Tube, Ø3×Ø5×185	1

BASE KIT DIAGRAM

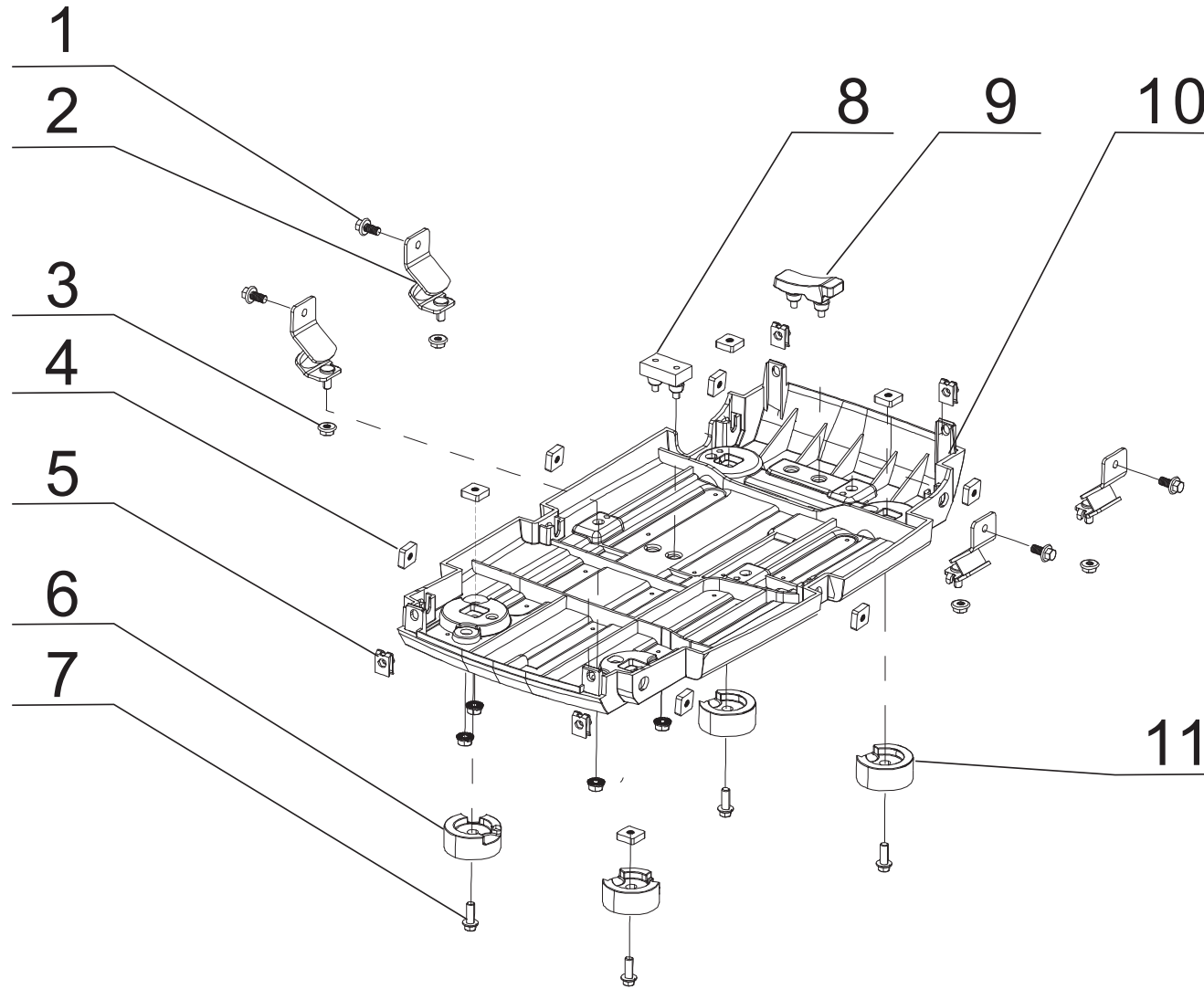


Figure E

BASE KIT PARTS LIST

#	Part Number	Description	Qty.
1	90001-0612-01A0	Hexagon Flange Bolt, M6 x 12, White Zinc	4
2	51005-Y2V0110-0001	Vibration Mount 1, Frame	4
3	90305-0600-31A0	Hexagon Flange Nut, M6, White Zinc	4
4	90326-Y2V0110-00A0	Slmnh, M6, White Zinc	10
5	17199-Y2V0110-00A0	Clip Nut, M5 White Zinc	4
6	51014-Y2V0140-0001	Foot Left, Rubber	2
7	90001-0614-01A0	Hexagon Flange Bolt, M6 x 14, White Zinc	4
8	50035-Y2V0210-0001	Bracket 1, Cushion Rubber	1
9	50035-Y2V0110-0001	Bracket 2, Cushion Rubber	1
10	51143-Y5V0210-Q202	Plate, Bottom	1
11	51014-Y2V0250-0001	Foot Right, Rubber	2

FUEL TANK DIAGRAM

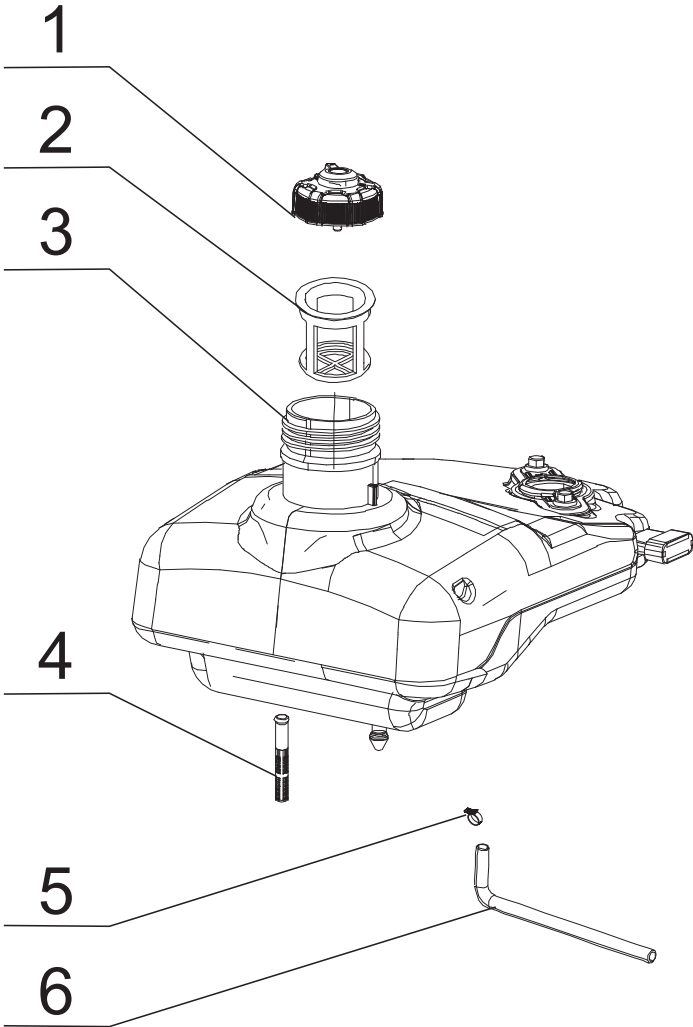


Figure F

FUEL TANK PARTS LIST

#	Part Number	Description	Qty.
1	16730-YHX0110-00A0	Fuel Tank Cap	1
2	16652-Y2V0110-00A1	Fuel Filter	1
3	16620-Y5V0810-Q2A0	Fuel Tank	1
4	16514-Y2V0110-00A0	Filter Element, Fuel Tank	1
5	90685-D105-0EA0	Clamp, Ø10.5 x 8 x 0.8	1
6	90686-Y2V0410-00M0	Fuel Pipe, Ø4.5×Ø8.5×(90+25)	1

CONTROL PANEL DIAGRAM

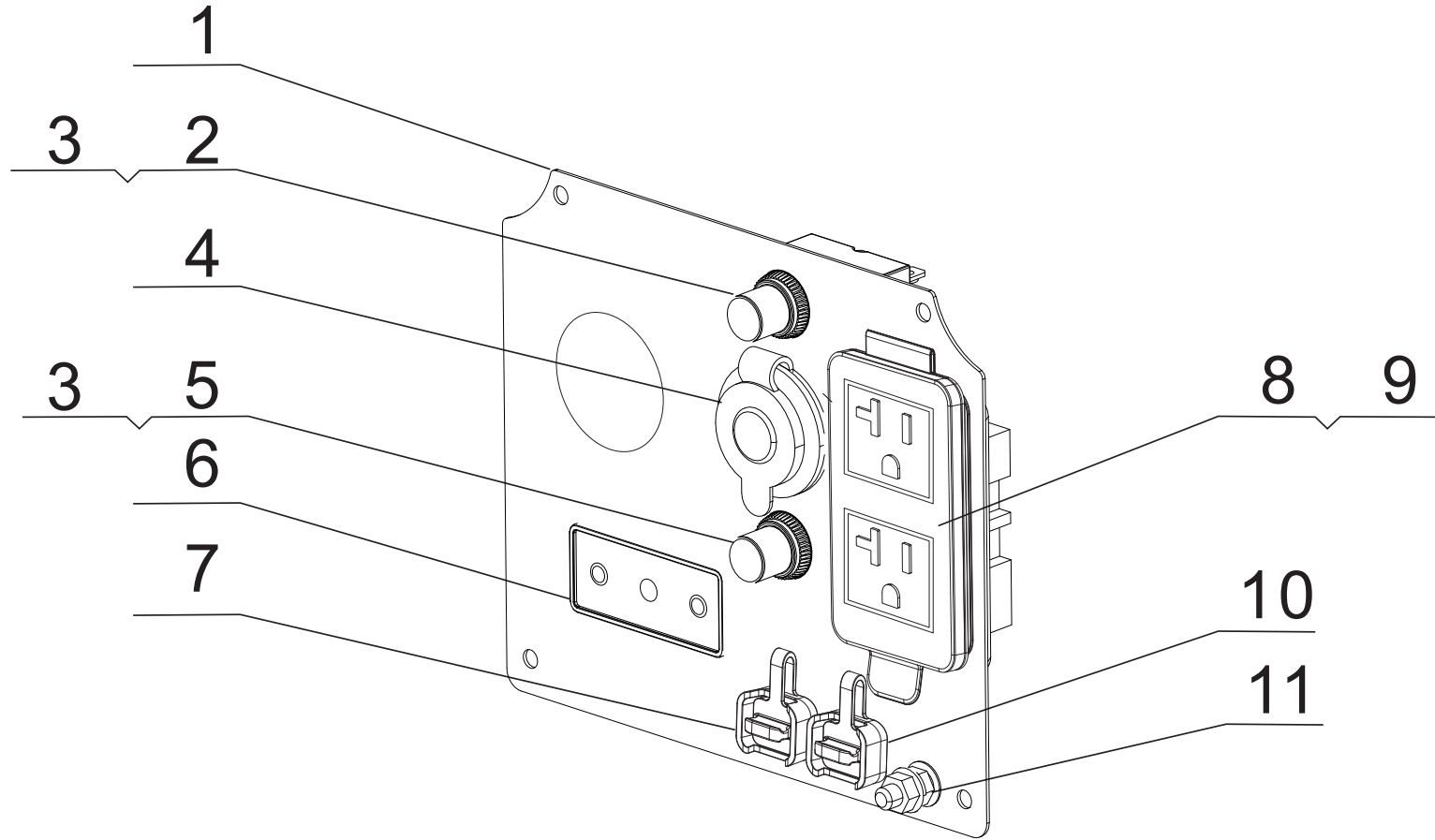


Figure G

CONTROL PANEL PARTS LIST

#	Part Number	Description	Qty.
1	35650-YHX0110-H700	Control Panel	1
2	31234-YBE0110-0000	Circuit Breaker, Push Button, 8A, 125/250V	1
3	35654-YGK0110-0000	Cover, Push Button	2
4	35619-Y110110-0000	Automotive Receptacle, 12V DC	1
5	31234-YBE0210-0000	Circuit Breaker, Push Button, 20A, 125/250V	1
6	35620-YHY0110-0000	Status Display Table	1
7	35614-YH30310-0000	Wireless Parallel, Red	1
8	35654-YBE0110-0000	Receptacle Cover, 5-20R	1
9	35614-Y730110-0000	5-20R Duplex, 20A, 125V	1
10	35614-YH30410-0000	Wireless Parallel, Black	1
11	35629-Y090110-0000	Grounding Terminal	1

WIRING DIAGRAM

