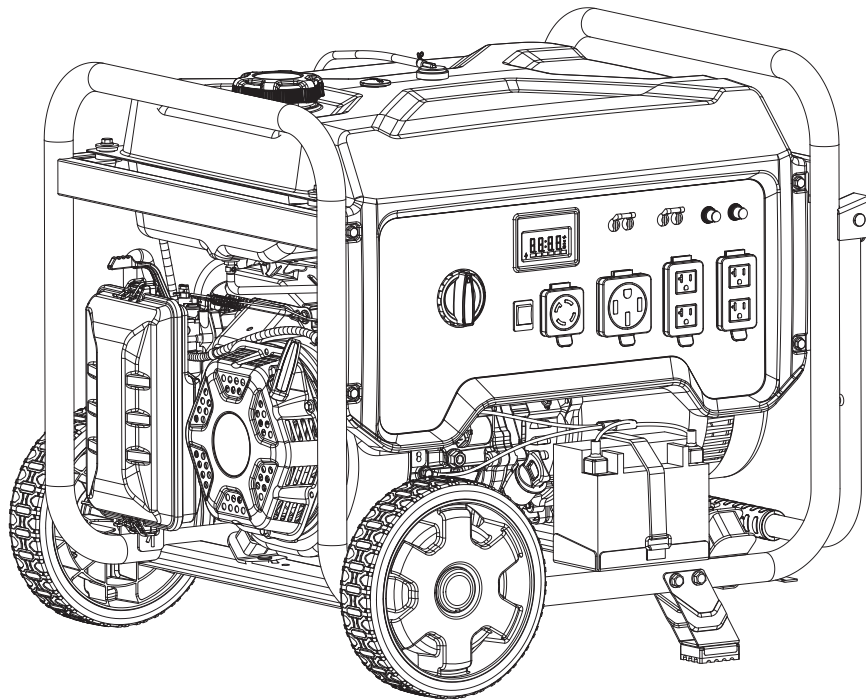




Champion Power Equipment, Inc.

**MODEL #201075**



## **PARTS INFORMATION**

**9500W ELECTRIC START GENERATOR**

**SERIAL NUMBER RANGE: ALL**



To order replacement parts please visit:  
**[shop.championpowerequipment.com](http://shop.championpowerequipment.com)**  
or call **1-877-338-0999**.

## **TABLE OF CONTENTS**

<b>Generator Parts Diagram</b> .....	<b>3</b>
<b>Generator Parts List</b> .....	<b>4</b>
<b>Engine Parts Diagram</b> .....	<b>5</b>
<b>Engine Parts Part List</b> .....	<b>6</b>
<b>Cylinder Head Diagram</b> .....	<b>8</b>
<b>Cylinder Head Part List</b> .....	<b>9</b>
<b>Carburetor Part Diagram</b> .....	<b>10</b>
<b>Carburetor Part List</b> .....	<b>11</b>
<b>Alternator Part Diagram</b> .....	<b>12</b>
<b>Alternator Part List</b> .....	<b>13</b>
<b>Fuel Tank Part Diagram</b> .....	<b>14</b>
<b>Fuel Tank Part List</b> .....	<b>15</b>
<b>Outlet Panel Part Diagram</b> .....	<b>16</b>
<b>Outlet Panel Part List</b> .....	<b>17</b>
<b>Frame Assembly Part Diagram</b> .....	<b>18</b>
<b>Frame Assembly Part List</b> .....	<b>19</b>
<b>Wiring Diagram</b> .....	<b>20</b>

# GENERATOR PARTS DIAGRAM

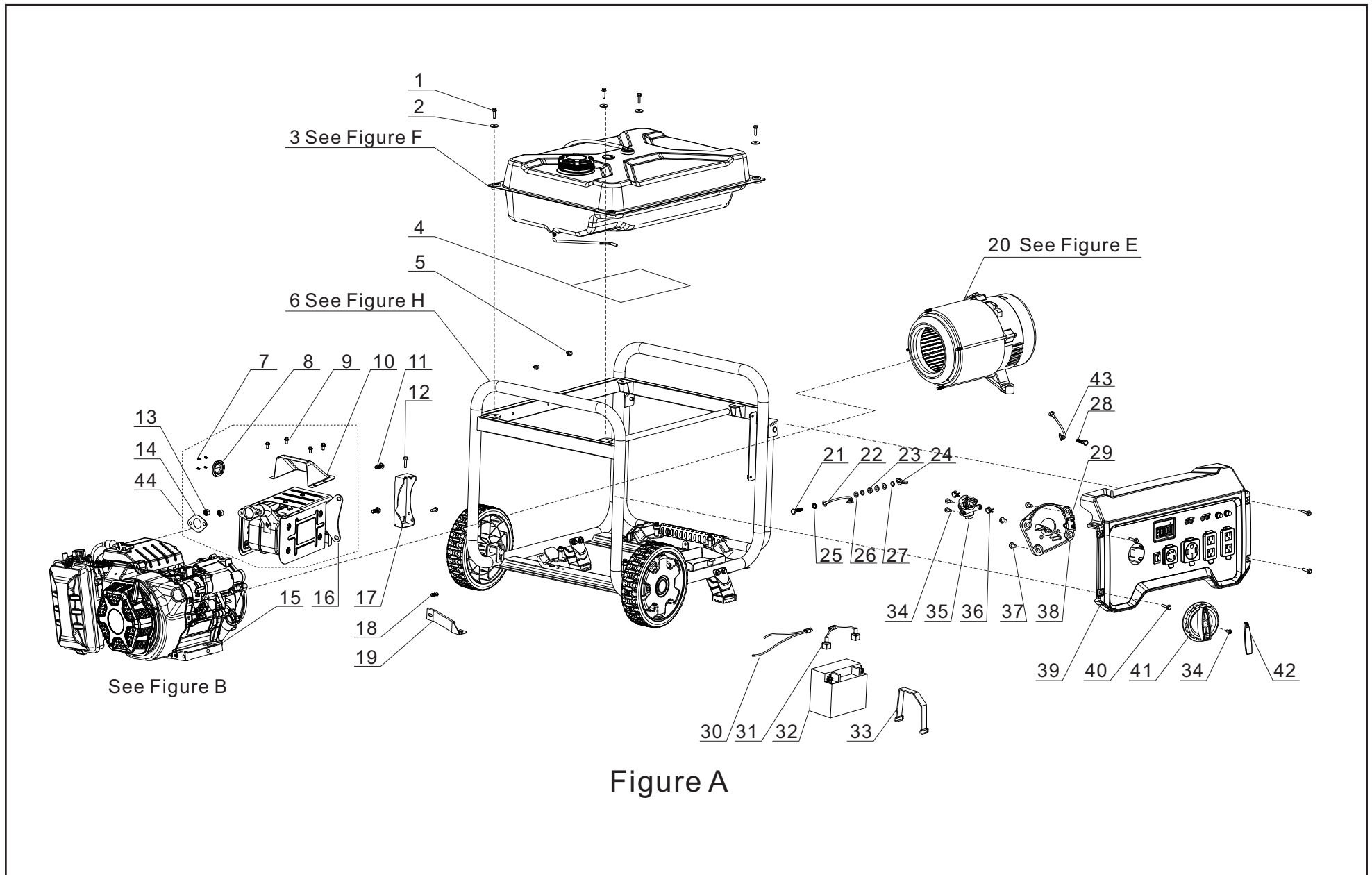


Figure A

## GENERATOR PARTS LIST

#	Part Number	Description	Qty.
1	90007-0625-0301	Hexagon Flange Bolt, M6 x 25, Black Zinc	4
2	90408-Y020110-0005	Flat Washer, Ø6, Black Zinc	4
3	ELYLQW-YXZJ-F000	Fuel Tank Assembly - See Figure F	1
4	82153-YGM0210-00A0	Heat Film	1
5	90684-Z250110-00A0	Clip, Ø8	2
6	ELYLQW-JJZJ-H000	Frame Assembly - See Figure H	1
7	90026-0408-09	Hexagon Flange Bolt, M4 x 8, White Zinc	4
8	18250-YGM0110-0000	Spark Arrestor	1
9	90007-0612-A301	Hexagon Flange Bolt, M6 x 12, Black Zinc	4
10	80019-YJP0210-H7A0	Guide Hood, Muffler	1
11	90001-0816-0109	Hexagon Flange Bolt, M8 x 16, White Zinc	2
12	90001-0816-0305	Hexagon Flange Bolt, M8 x 16, Black Zinc	2
13	90303-0800-0301	Nut, M8, Black Zinc	2
14	18101-Z0D0310-00A0	Muffler Gasket	1
15	R95A0DPPHF3-CMP301	Engine, 500 cc - See Figure B	1
16	18100-YGM0211-H7A0	Muffler	1
17	18030-YJ70110-0900	Bracket, Muffler Support	1
18	90001-0612-0305	Hexagon Flange Bolt, M6 x 12, Black Zinc	1
19	17003-YJ70110-0100	Bracket, Air Cleaner Support	1
20	ELYLQW-DJZJ-E000	Alternator Assembly - See Figure E	1
21	90001-0625-0305	Hexagon Flange Bolt, M6 x 25, Black Zinc	1
22	30009-Y910110-0000	Grounding Wire	1
23	90303-0600-3305	Hexagon Nut, M6, Black Zinc	1
24	90312-0600-0301	Wing Nut, M6, Black Zinc	1
25	90415-0600-Z301	Lock Washer, Toothed, Black Zinc	1
26	90408-0600-E305	Flat Washer, Black Zinc	3
27	90403-0600-0305	Spring Washer, Black Zinc	2
28	90001-0516-0105	Hexagon Flange Bolt, M5 x 16, White Zinc	1
29	35190-YJ70110-0000	Microswitch, Engine Stop	1
30	31114HYGM0110-0001	DC Wire Harness, Engine	1

#	Part Number	Description	Qty.
31	31112HYGM0210-0000	DC Wire Harness, Battery	1
32	31110-Y9X0110-00A0	Battery, 12V/14Ah	1
33	31115-Y6D0110-0001	Strap, 246×20×3.5, Battery	1
34	90254-0416-51A0	Screw Assembly, M4×16, White Zinc	3
35	16750-YJ10110-0000	Valve, Fuel	1
36	90685-D085-0EA0	Clamp, Ø8.5 × 8 × 0.6	2
37	90124-Y9T0510-00A0	Self Tapping Screw, PT5×16	4
38	16757-YJ10110-0000	Bracket, Fuel Valve Mounting	1
39	35610-YKW0110-H200	Control Panel Assembly - See Figure G	1
40	90007-0616-A305	Hexagon Flange Bolt, M6 x 16, Black Zinc	4
41	35643-YJ10110-Q2A0	Knob, Fuel Valve	1
42	82007-YJ70110-L400	Decorative Covers PMS 109C	1
43	30009-YJ70110-0000	Grounding Wire	1
44	ELYLQW-XSQ-0000	Muffler Assembly	1

# ENGINE PARTS DIAGRAM

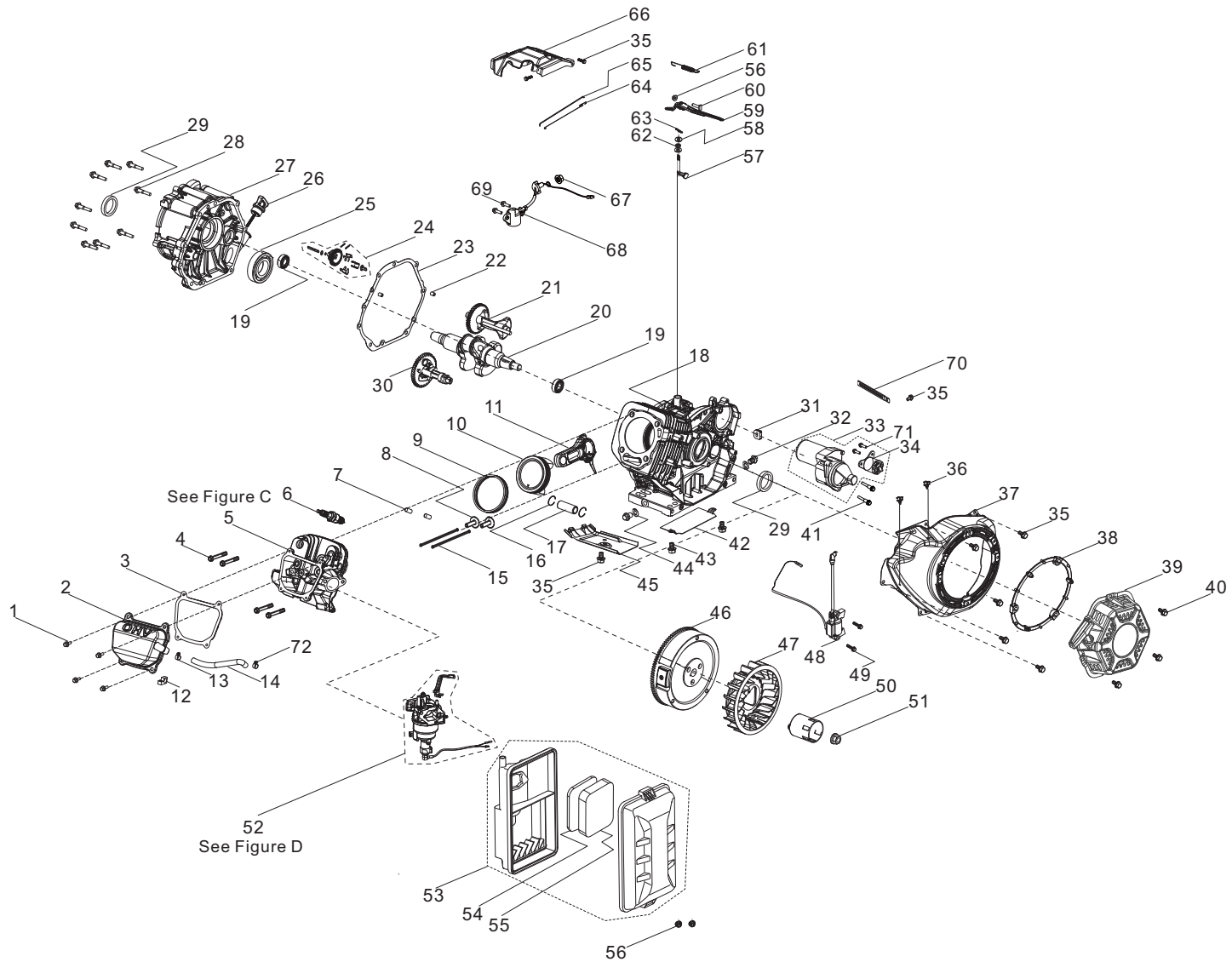


Figure B

**ENGINE PARTS PART LIST**

#	Part Number	Description	Qty.
1	90001-0612-0101	Hexagon Flange Bolt, M6 x 12, White Zinc	4
2	12410-Z0D0110-01A0	Cylinder Head Cover, White Zinc	1
3	12004-Z0J0510-0000	Cylinder Head Cover Gasket	1
4	12003-Z0N0110-0100	Cylinder Head Bolt, M10 x 85, White Zinc	4
5	R500DV-QGT-C001	Cylinder Head Assembly - See Figure C	1
6	30010-Z010110-00A0	Spark Plug, F6RTC	1
7	90502-1220-00A0	Pin, Ø12 x 20	2
8	14081-Z080110-00A0	Valve Tappet	2
9	13200-Z0D0110-00A9	Piston Ring Assembly	1
10	13111-Z0D0110-00A9	Piston	1
11	13010-Z0D0110-00A0	Connecting Rod Assembly	1
12	90804-Y5Z0210-0001	Stop Block	1
13	90685-Z130210-0100	Clamp, Ø17 x 1.4	1
14	17004-Z0D0310-0000	Tube, Breather, Ø12.5xØ17 x 115	1
15	14070-Z0D0110-00A0	Valve Lifter	2
16	13122-Z100110-00A0	Piston Pin Clip	2
17	13121-Z0D0110-00A0	Piston Pin, Ø20.2 x 53.5	1
18	11310-Z0D0110-0BA0	Crankcase	1
19	90548-0202-00A0	Bearing, 6202	2
20	13300-Z0D0110-00A0	Crankshaft	1
21	13401-Z0D0110-00A0	Balancing Shaft	1
22	90502-0812-00A0	Pin, Ø8 x 12	2
23	11001-Z0D0110-0000	Crankcase Gasket	1
24	16400-Z100110-00A0	Governor Gear Assembly	1
25	90547-6208-00A1	Bearing, 6208	1
26	15010-Z0D0110-L400	Oil Dipstick, Yellow	1
27	11411-Z0D0110-0BA0	Crankcase Cover	1
28	90001-0840-03	Hexagon Flange Bolt, M8 x 40, Black Zinc	9
29	90682-Z0J0110-0001	Oil Seal, Ø52 x Ø40 x 9	2
30	14200-Z0D0110-00A9	Camshaft	1

#	Part Number	Description	Qty.
31	28101-Z080110-0001	Plug, Rubber	1
32	11007-Z080110-0300	Drain Plug Bolt, M12 x 18, Black Zinc	2
33	09100-Z170310-0100	Starter Motor Assembly	1
34	30500-Z170120-0000	Starting relay, Starter Motor	1
35	90001-0612-03	Hexagon Flange Bolt, M6 x 12, Black Zinc	9
36	90685-Z940310-00A1	Clip	2
37	28110-Z710710-L400	Cover, Cooling Fan, PMS 109C	1
38	28261-Z980110-0001	Retainer Ring, Recoil Starter	1
39	28200-Z590110-H200	Recoil Starter Assembly	1
40	90001-0620-03	Hexagon Flange Bolt, M6 x 20, Black Zinc	3
41	90001-0835-0102	Hexagon Flange Bolt, M8 x 35, White Zinc	2
42	19306-Z0D0110-0100	Air Deflector, Crankcase, White Zinc	1
43	90001-0610-03	Hexagon Flange Bolt, M6 x 10, Black Zinc	2
44	90412-Z080110-00A0	Washer, Ø21 x Ø12 x 2	2
45	19304-Z100210-0101	Cylinder Body Shroud	1
46	13510-Z0D0410-0000	Flywheel	1
47	19352-Z100120-00A2	Cooling Fan, Engine	1
48	30400-Z0D0110-0000	Ignition Coil	1
49	90001-0628-01A0	Hexagon Flange Bolt, M6 x 28, White Zinc	2
50	28002-Z0D0110-0000	Starter Pulley, White Zinc	1
51	13501-Z080110-00A0	Flywheel Nut, M16 x 1.5, White Zinc	1
52	R500DV-HYQ-D002	Carburetor Assembly - See Figure D	1
53	17100-Z0D0210-0000	Air Cleaner Assembly	1
54	17151-Z0D0210-0000	Element 1, Air Cleaner	1
55	17151-Z0D0310-0000	Element 2, Air Cleaner	1
56	90305-0600-33	Hexagon Flange Nut, M6, Black Zinc	3
57	16061-Z0D0110-00A0	Governor Shaft	1
58	90412-Z080210-00A0	Washer, Ø8.4 x Ø19.5 x 0.8	2
59	16070-Z100120-0001	Governor Arm, White Zinc	1
60	16072-Z010310-0000	Governor Support Bolt, M6 x 21, Black Zinc	1

#	Part Number	Description	Qty.
61	16063-Z0D0110-0100	Spring, Governor	1
62	90682-Z100210-0001	Oil Seal, Ø14 x Ø8 x 4	1
63	90501-Z010110-0001	Pin, Governor Arm, White Zinc	1
64	16012-Z080110-00A0	Throttle Returning Spring	1
65	16062-Z100110-00A1	Gouverneur Rod, White Zinc	1
66	16520-Z0D0110-0100	Air Guide, Cooling Fan, White Zinc	1
67	90305-Z010210-0300	Hexagon Flange Nut, M10, Black Zinc	1
68	37060-Z080410-0000	Engine oil Sensor, W/O Nut	1
69	90001-0616-01A0	Hexagon Flange Bolt, M6 x 16, White Zinc	2
70	90684-Z030120-0001	Clip, Ø6 x 10.6 x 100	1
71	90001-0516-01	Hexagon Flange Bolt, M5 x 16, White Zinc	2
72	90685-Z0D0110-0100	Clamp, Ø16 x 1.6, White Zinc	1

# CYLINDER HEAD DIAGRAM

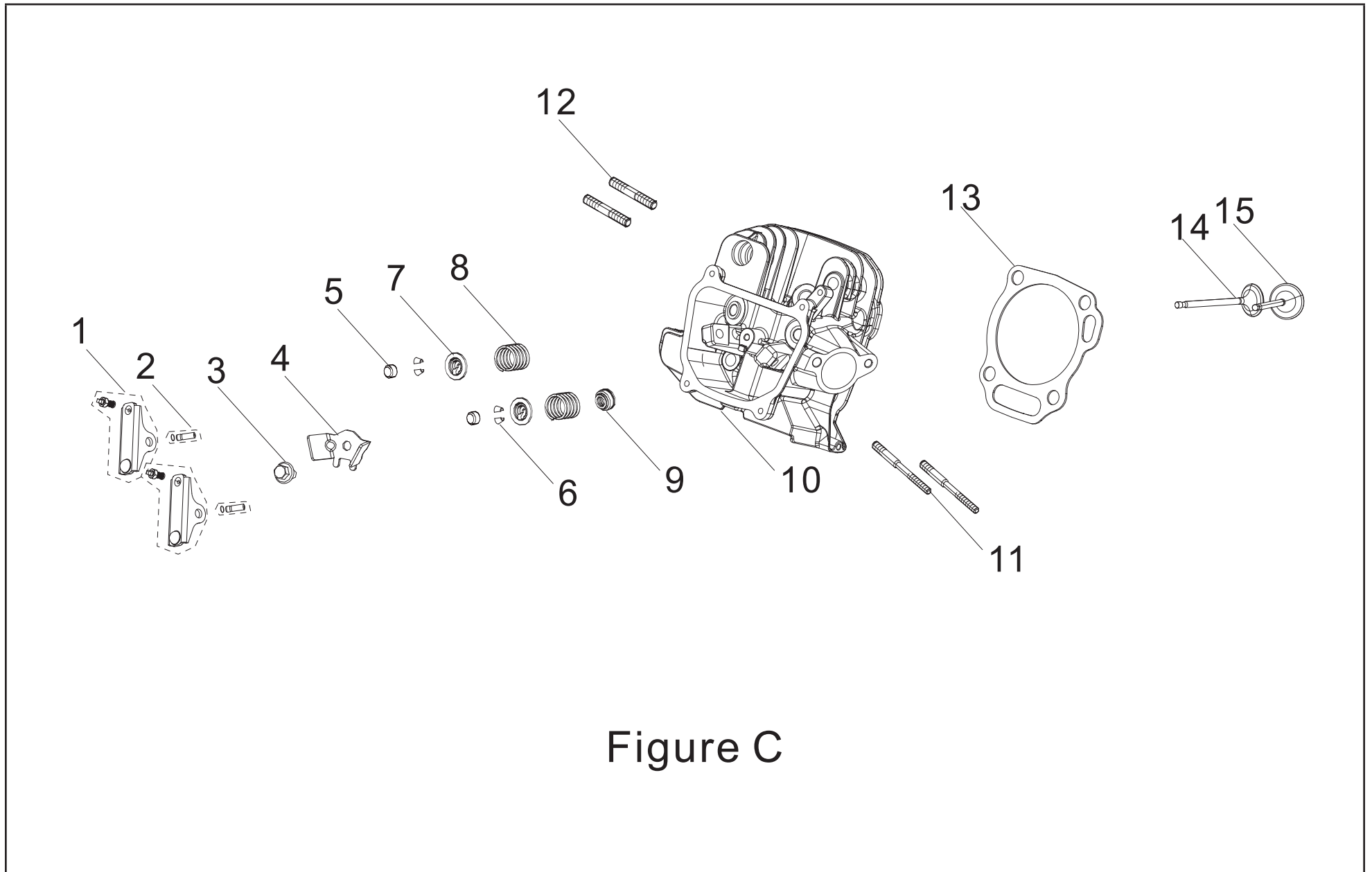


Figure C



**CYLINDER HEAD PART LIST**

#	Part Number	Description	Qty.
1	14310-Z0D0110-00A0	Rocker Arm Assembly	2
2	14318-Z0D0210-00A0	Rocker Arm Shaft Assembly	2
3	90001-0612-03	Hexagon Flange Bolt, M6 x 12, Black Zinc	1
4	12419-Z950311-00A0	Pin Limit Plate, Cylinder Head	1
5	12104-Z010110-00A0	Lash Cap, Ø5.6×Ø8.5×5.2, Valve	2
6	12109-Z0D0110-00A0	Valve Lock Clamp, Ø5.5×Ø9	4
7	12112-Z0D0110-00A0	Valve Spring Retainer	2
8	12103-Z990110-00A0	Valve Spring	2
9	12101-Z020110-00A0	Valve Seal Guide	1
10	12140-Z0D0710-0BA0	Cylinder Head	1
11	90204-Z100410-00A0	Stud, M6/M8 x 110, Black Zinc	2
12	90203-Z010110-0301	Stud, M8 x 34, Black Zinc	2
13	12131-Z0D0210-0000	Cylinder Head Gasket	1
14	12121-Z0D0210-00A0	Exhaust Valve	1
15	12111-Z0D0210-00A0	Intake Valve	1

# CARBURETOR PART DIAGRAM

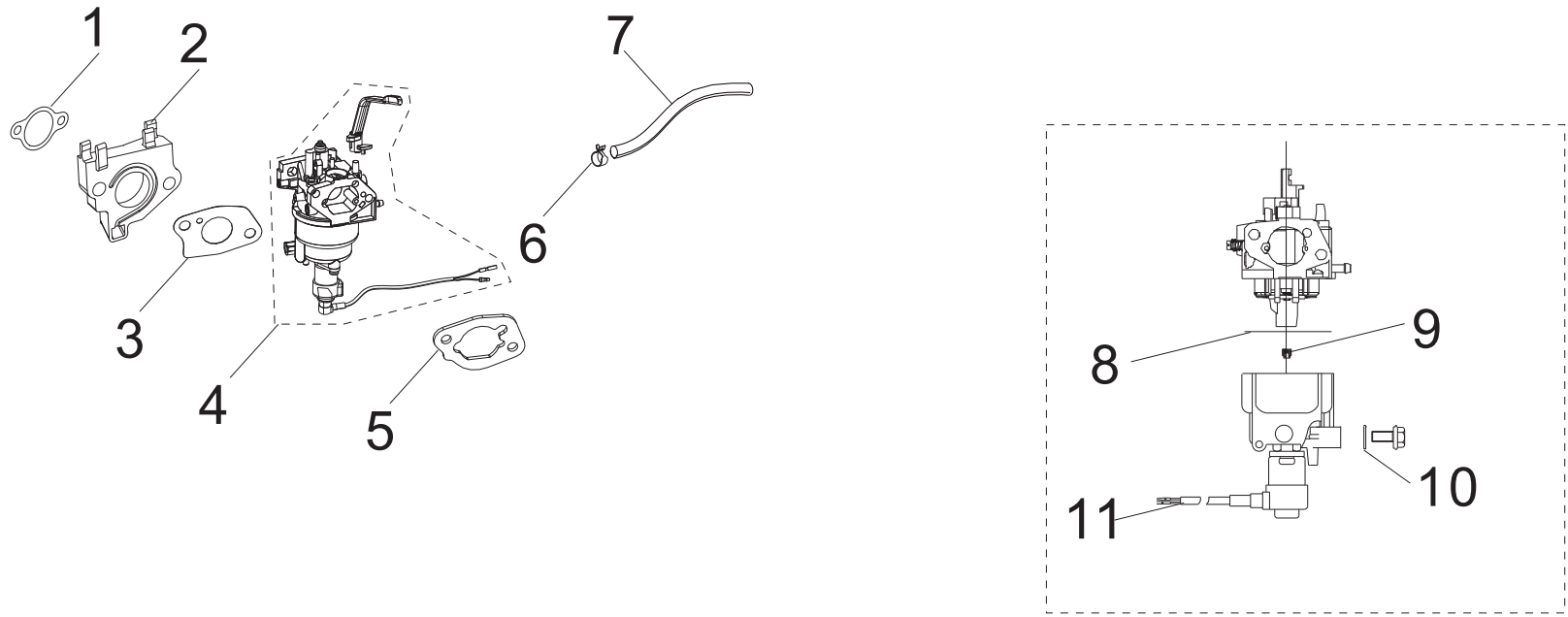


Figure D

**CARBURETOR PART LIST**

#	Part Number	Description	Qty.
1	17002-Z0D0110-0000	Gasket, Inlet	1
2	16003-Z0D0110-0001	Carburetor Insulator Plate	1
3	16001-Z100110-0000	Carburetor Gasket	1
4	16100-Z0D0611-00M0	Carburetor	1
5	17001-Z0D0110-0000	Air Cleaner Gasket	1
6	90685-D080-0EAO	Clamp, Ø8 x 7 x 0.6	1
7	90686-Z0D0910-00M0	Fuel Tube, Ø4.5 x Ø8.5 x 435	1
8	16112-Z080110-0000	Seal Ring, Float	1
9	16161-Z0C0110-00A0	Main Jet(H128×0.39), Standard	1
	16161-Z191210-00A2	Main Jet(H128×0.41), Altitude 3000-6000 Feet	/
	16161-Z100410-00A2	Main Jet(H128×0.43), Altitude 6000-8000 Feet	/
10	90681-Z510210-00A0	Seal Ring	1
11	16108-Z080310-00A0	Valve, Solenoid, 7Ω	1

# ALTERNATOR PART DIAGRAM

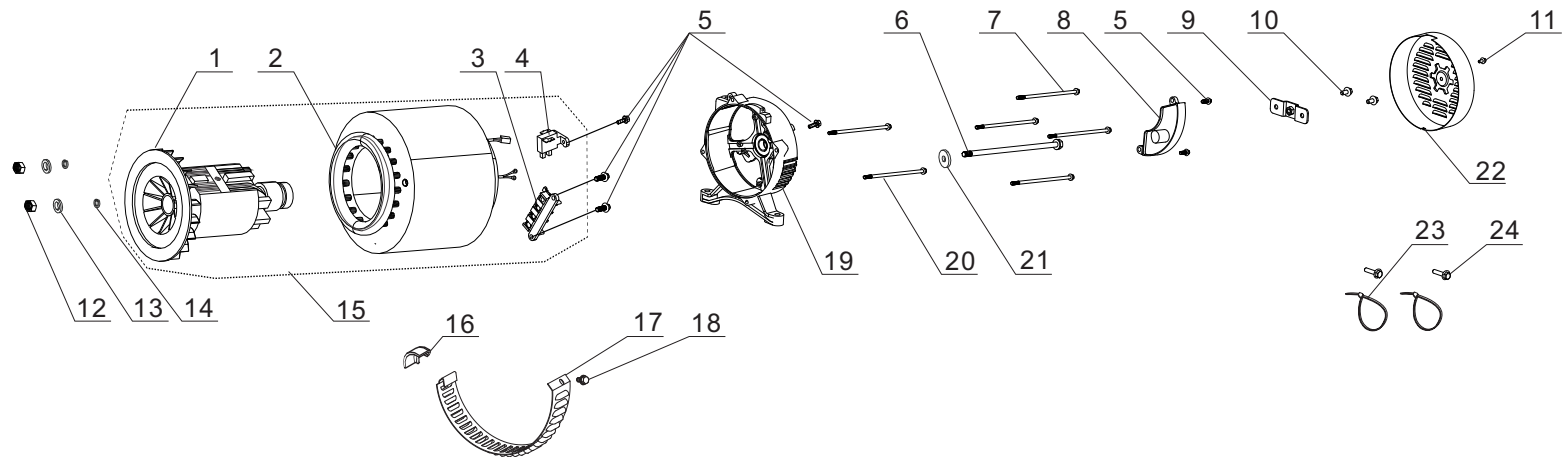


Figure E

**ALTERNATOR PART LIST**

#	Part Number	Description	Qty.
1	31330-YGM0110-0000	Rotor, AL, D204 x 158	1
2	31310-YGM0110-0000	Stator, AL, D204 x 158	1
3	31303HY090110-0000	Terminal Block	1
4	31320-YGM0110-0000	Carbon Brush Assembly	1
5	90001-0516-0105	Hexagon Flange Bolt, M5 x 16, White Zinc	6
6	30049-Y950110-0101	Bolt M10 x 285, Rotor, White Zinc	1
7	30048-Y950110-0100	Bolt M6 x 199, Stator, White Zinc	4
8	30060-YGM0210-0000	AVR	1
9	51124-YJ70110-0100	Mounting Bracket, White Zinc	1
10	90007-0512-A301	Hexagon Flange Bolt, M5 x 12, Black Zinc	2
11	90001-0612-0305	Hexagon Flange Bolt, M6 x 12, Black Zinc	1
12	90303-0500-31A0	Nut, M5 x 8, White Zinc	2
13	90408-0500-E1A0	Flat Washer, Ø5, White Zinc	2
14	90403-0500-03	Standard Spring Washer, Black Zinc	2
15	31300-YGM0110-0000	Alternator Assembly, AL, Ø204 x 158	1
16	30023-YC20110-00A0	Stopper, Motor Right Cover	1
17	30024-Y730110-0001	Vent, Alternator Fan	1
18	90001-0510-0105	Hexagon Flange Bolt, M5 x 10, White Zinc	1
19	30021-YJ70111-00A0	End Housing	1
20	31316HYGM0110-0600	Bolt, Stator, M5 x 232	2
21	90408-Y030110-0100	Flat Washer, White Zinc	1
22	30022-YJ70110-L400	Cover, End Housing	1
23	90727-Y020110-00A0	Tie, 4x200	2
24	90001-0516-0105	Hexagon Flange Bolt, M5 x 16, White Zinc	2

# FUEL TANK PART DIAGRAM

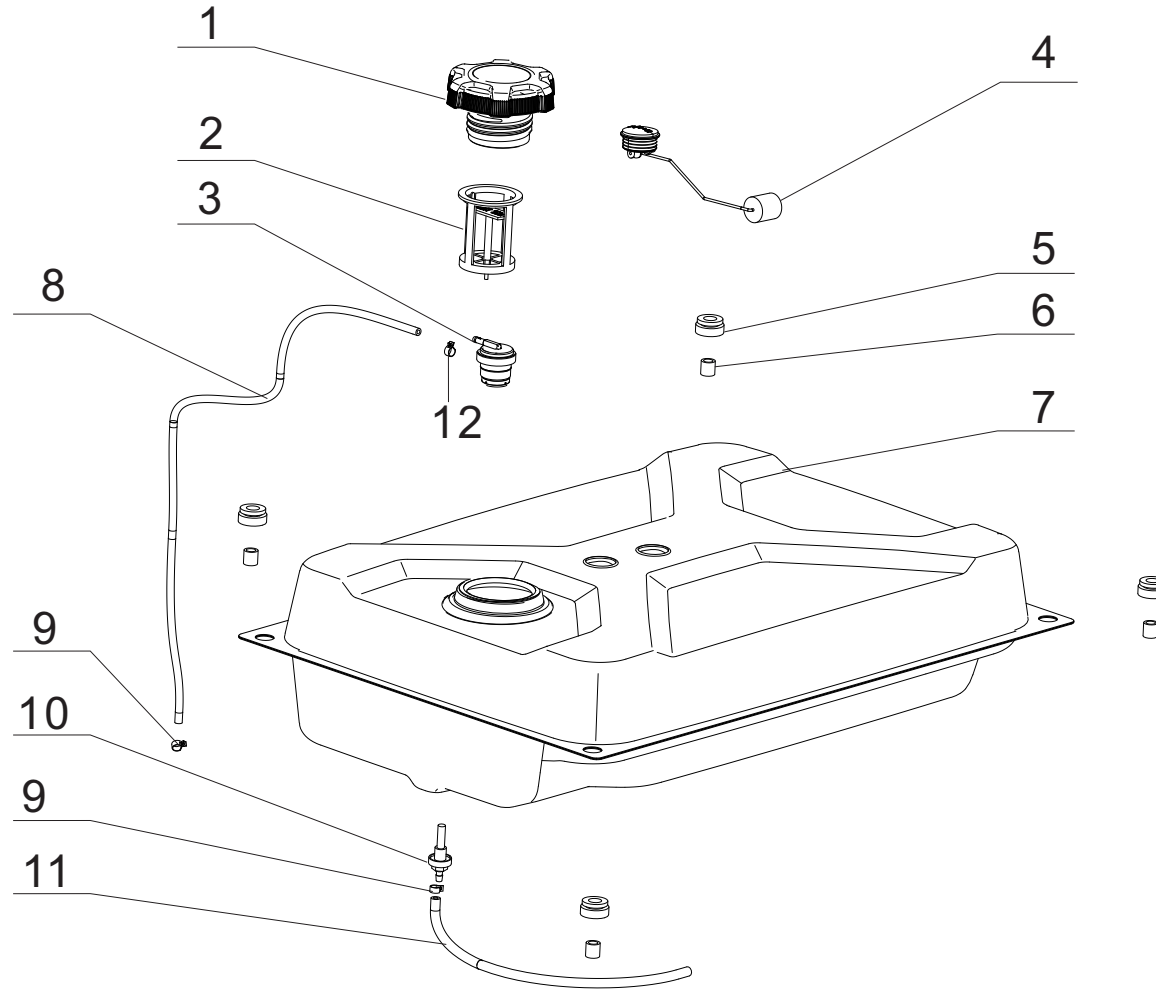


Figure F

**FUEL TANK PART LIST**

#	Part Number	Description	Qty.
1	16730-YGM0110-00A0	Fuel Tank Cap	1
2	16652-YGM0110-00A0	Fuel Filter	1
3	15150-YGK0110-00A0	Valve, Reversal	1
4	37200-YGM0110-00A0	Fuel Gauge	1
5	16601-Y020120-0001	Vibration Mount, Ø12.5 x 16, Fuel Tank	4
6	90683-Y020110-0005	Bushing, White Zinc	4
7	16620-YGM0510-L4A0	Fuel Tank, 29.1 L, Yellow	1
8	16804-YGM0210-0000	Tube, Fuel Tank Vent, Ø4.5 x Ø8.5 x 810	1
9	90685-D090-0EA0	Clamp, Ø9x0.8x8	2
10	16680-YJ30110-00A0	Fitting, Fuel Tank Drain	1
11	90686-YKW0110-00M0	Tube, Fuel, Ø4.5 x Ø8.5 x 285	1
12	90740-Z010610-00A1	Clamp, Ø9	1

# OUTLET PANEL PART DIAGRAM

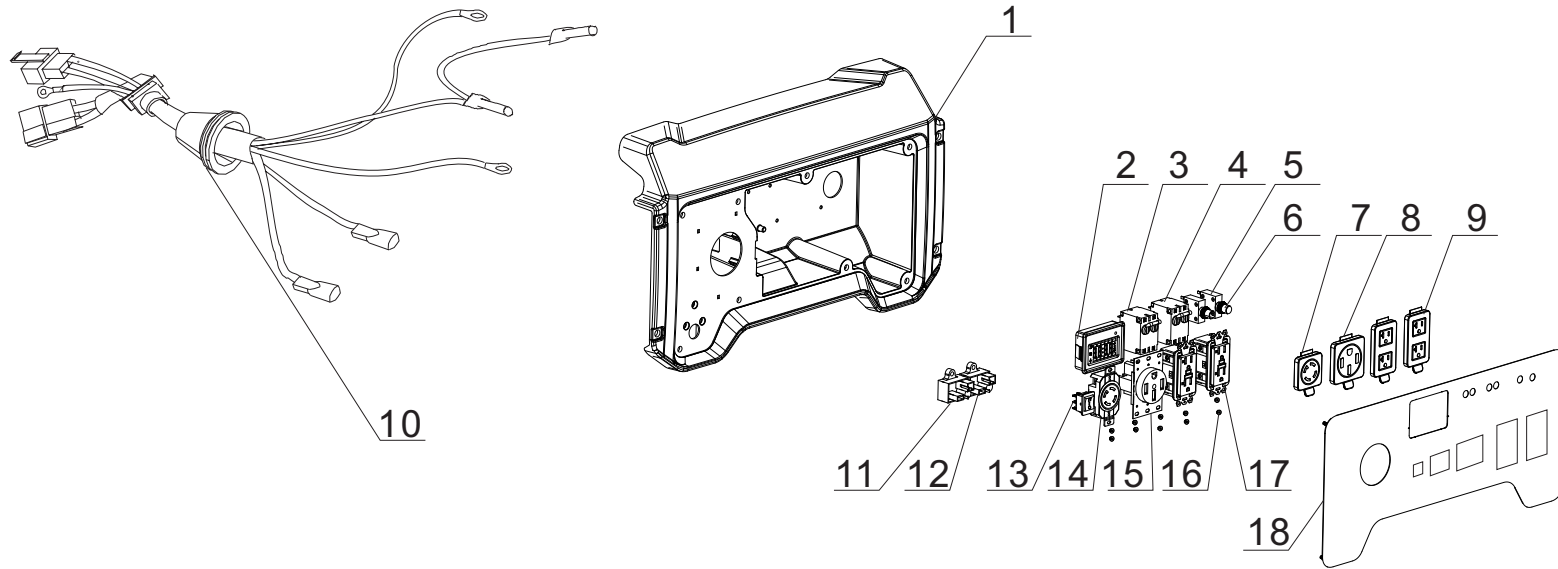


Figure G



**OUTLET PANEL PART LIST**

#	Part Number	Description	Qty.
1	35680-YKW0110-Q200	Control Panel Housing	1
2	35632-YKW0110-0000	Intelligauge, INT2COF	1
3	35627-YGM0110-0000	39.5Amp Circuit Breaker, 2P, 250V	1
4	35627-Y120310-0000	30Amp Circuit Breaker, 2P, 250V	1
5	31234-YBE0210-0000	20Amp Circuit Breaker, Push Button	2
6	35654-YGK0110-0000	Cover, Push Button Circuit Breaker	2
7	35654-YBE0210-0000	Receptacle Cover, L14-30R	1
8	35654-Y2T0110-0000	Receptacle Cover, 14-50R	1
9	35654-YBE0110-0000	Receptacle Cover, 5-20R	2
10	35660HYKW0110-0000	Wire Harness, Control Panel	1
11	30007-Y9X0210-0000	Charging Module	1
12	30008-YGK0210-0000	OVF Module	1
13	35160-YJ90110-0000	Switch, Engine	1
14	35614-Y4D0210-0000	L14-30 Receptacle, 30A, 125V/250V	1
15	35614-Y4D0310-0000	14-50R Receptacle, 50A, 125V/250V	1
16	90305-0400-71A0	Hexagon Flange Nut, M4, White Zinc	10
17	35614-Y730110-0000	5-20R Receptacle, 20A, 125V	2
18	35650-YKW0110-H200	Control Panel	1

# FRAME ASSEMBLY PART DIAGRAM

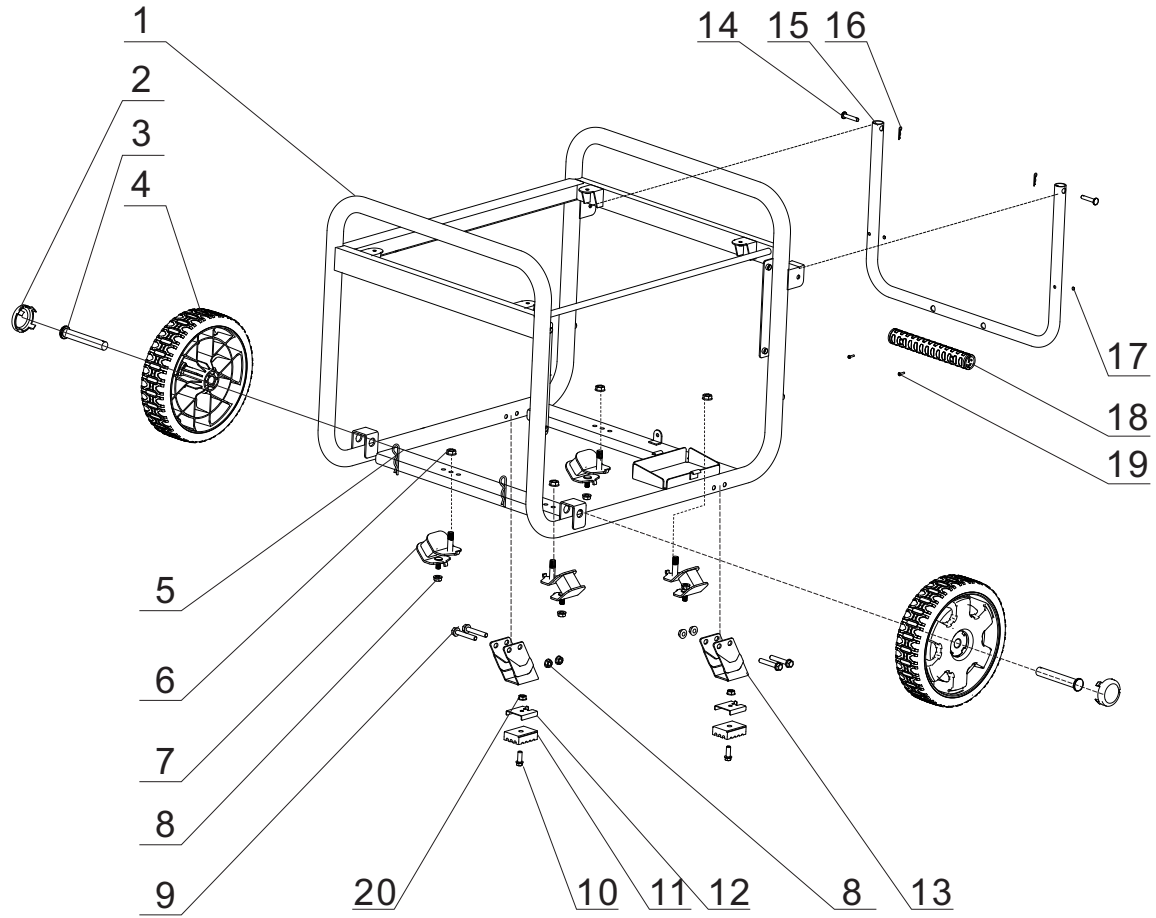


Figure H

**FRAME ASSEMBLY PART LIST**

#	Part Number	Description	Qty.
1	51100-YKW0110-H2A0	Frame	1
2	44001-V580110-L401	Cover, Hub Decorated, Yellow	2
3	44020-YGM0110-0300	Roll Pin, Ø16 x 95, Black Zinc	2
4	44110-YGM0110-L400	Wheel, 9.5 in, Yellow	2
5	90501-Y2C0110-03A1	R-Clip, Ø3 x 65.5, Black Zinc	2
6	90306-1000A0301	Hexagon Flange Nut, M10, Black Zinc	4
7	51012HY030120-0000	Vibration Mount 1, Frame	4
8	90305-0800-3305	Hexagon Flange Nut, M8, Black Zinc	8
9	90001-0850-0301	Hexagon Flange Bolt, M8 x 50, Black Zinc	4
10	90001-0620-0305	Hexagon Flange Bolt, M6 x 20, Black Zinc	2
11	51014-YJ70110-0000	Vibration Pad, 53x40x16, Frame	2
12	24329-YJ70110-H200	Bracket, Anti-Rotation	2
13	51016-YJ70110-H2A0	Support Leg	2
14	90504-Y9X0110-0305	Pin Shaft, Black Zinc	2
15	54110-YGM0110-H2A0	Handle, Ø25 x 1.2	1
16	90583-YGK0110-03A0	R-Clip, Ø2 x 38, Black Zinc	2
17	90722-YEC0110-0001	Plug, End	2
18	54101-YGM0110-L400	Handle Grip	1
19	90103-0416-5301	Screw, M4x16, Black Zinc	2
20	90305-0600-3301	Hexagon Flange Nut, M6, Black Zinc	2

# WIRING DIAGRAM

201075 R9500DP-PH 电路图 20220505

