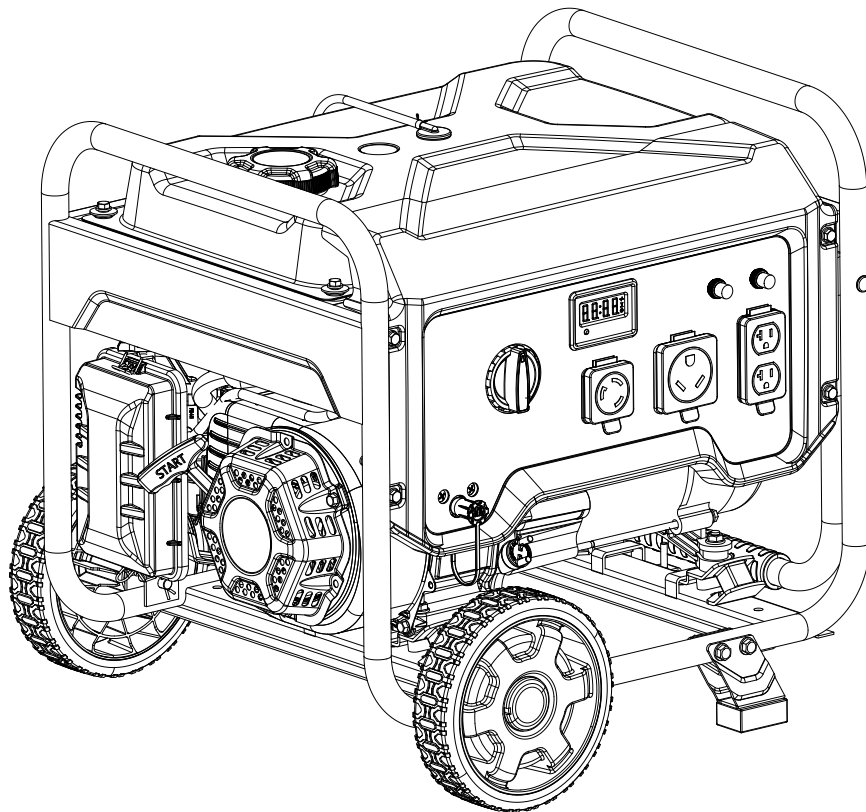


Champion Power Equipment, Inc., Santa Fe Springs, CA USA

MODEL #201076



PARTS INFORMATION

3650W DUAL FUEL PORTABLE GENERATOR

SERIAL NUMBER RANGE: ALL



To order replacement parts please visit:
shop.championpowerequipment.com
or call **1-877-338-0999**.

TABLE OF CONTENTS

Generator Parts Diagram	3
Generator Parts List	4
Engine Parts Diagram	5
Engine Parts Part List	6
Cylinder Part Diagram	8
Cylinder Part List	9
Alternator Part Diagram	10
Alternator Part List	11
Fuel Tank Part Diagram	12
Fuel Tank Part List	13
Control Panel Part Diagram	14
Control Panel Part List	15
Frame Assembly Part Diagram	16
Frame Assembly Part List	17
Wiring Diagram	18

GENERATOR PARTS DIAGRAM

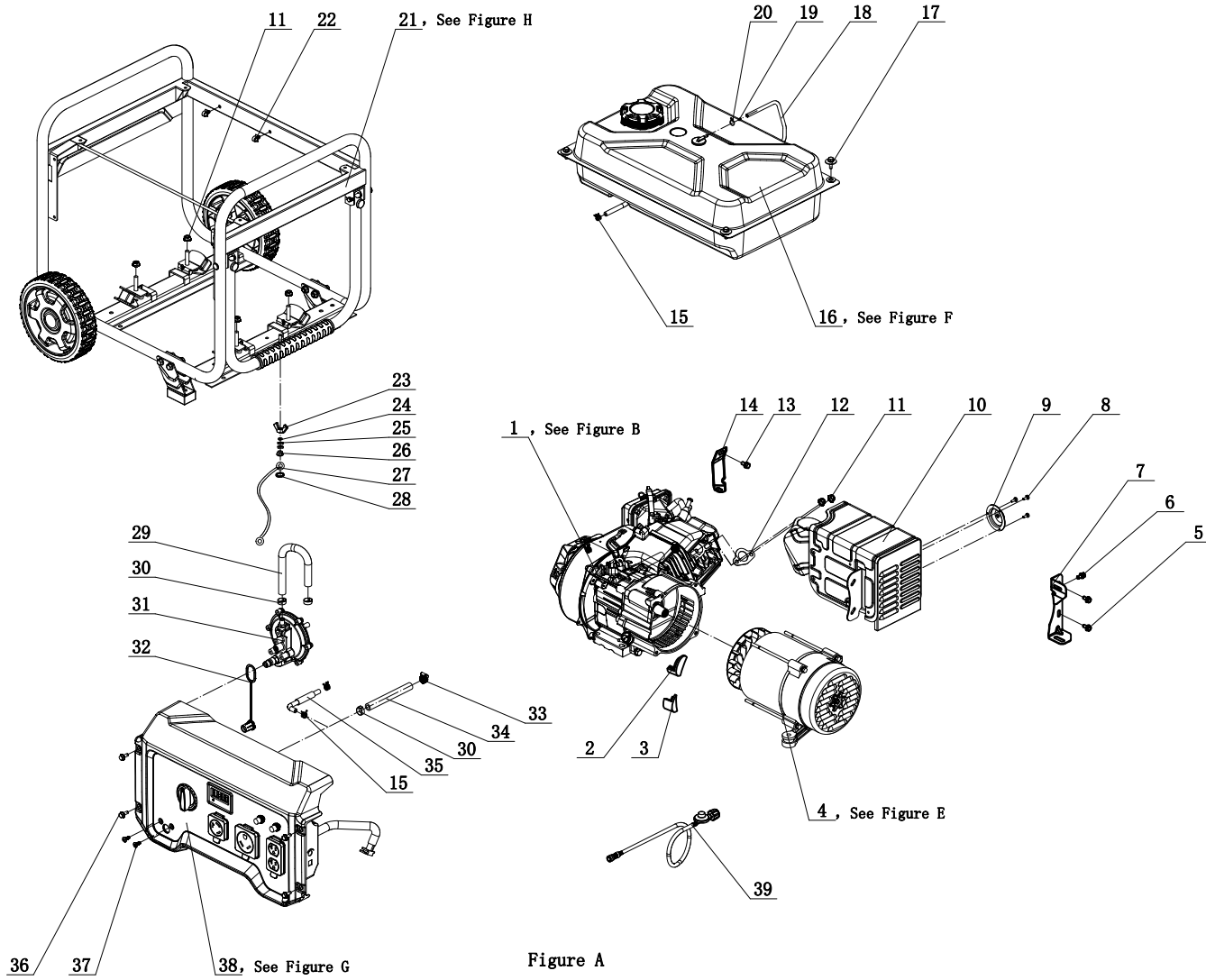


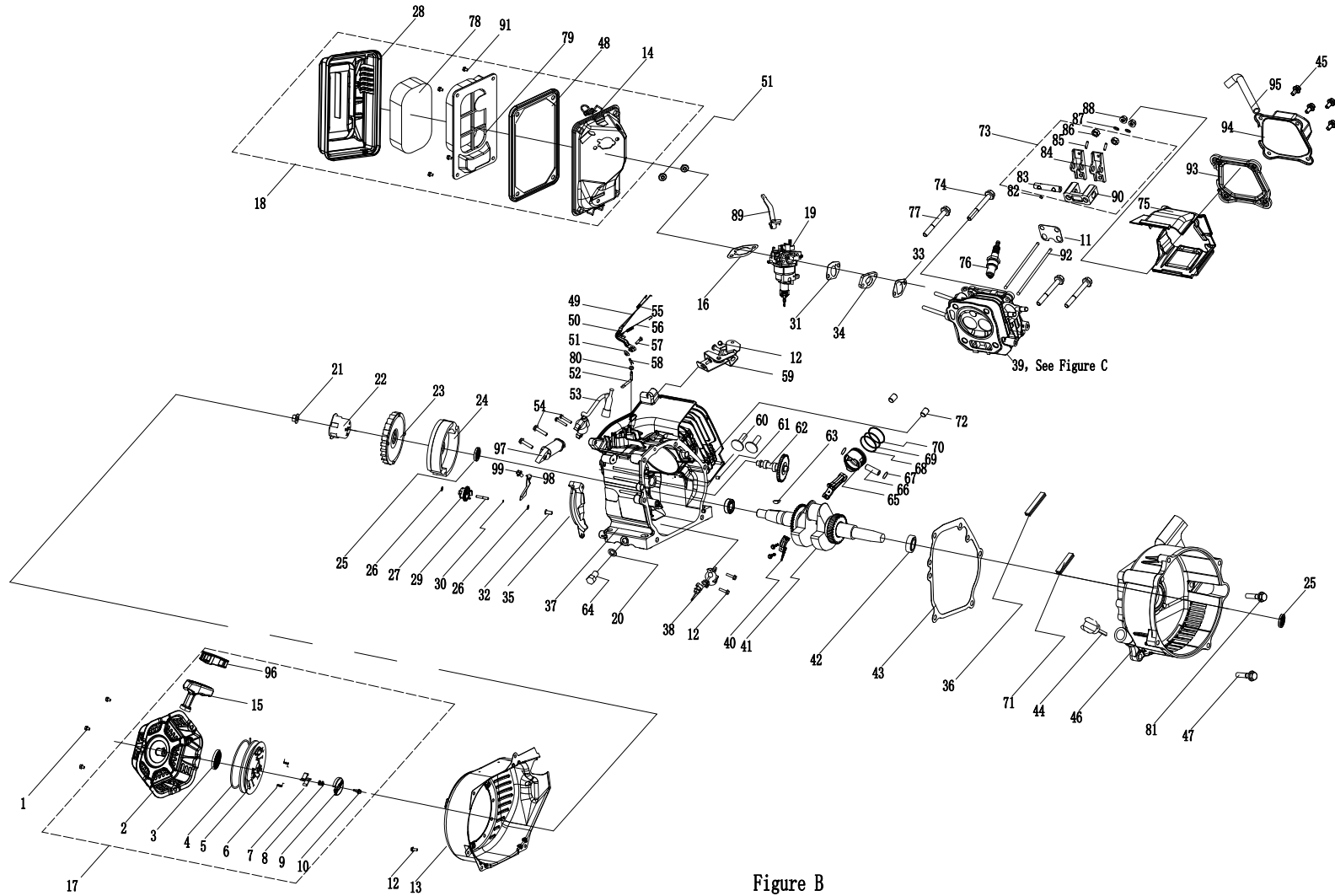
Figure A

GENERATOR PARTS LIST

#	Part Number	Description	Qty.
1	27.696.48	Engine, 224cc, See Figure B	1
2	122.190005.00	Rubber, Fore-Cover, B	1
3	122.190005.01	Rubber, Fore-Cover, A	1
4	124.190000.23	Alternator Assembly, AI, Ø160 x 130 mm, CSA, See Figure E	1
5	1.5789.0620	Flange Bolt M6 x 20	2
6	1.5789.0615	Flange Bolt M6 x 15	1
7	27.100100.01	Bracket, Muffler	1
8	1.823.0406	Screw M4 x 6	3
9	27.101300.00	Spark Arrester	1
10	27.101000.04.2	Muffler Assembly	1
11	1.6177.1.08	Lock Nut M8, Flange	6
12	26.100001.00	Gasket, Exhaust	1
13	1.5789.0608	Flange Bolt M6 x 8	1
14	23.090006.21	Bracket, Air Cleaner Support	1
15	2.06.016	Clamp Ø8.8 x b8	3
16	122.070000.66	Fuel Tank Assembly, See Figure F	1
17	2.08.143.1	Flange Bolt/Washer Assembly M6 x 20, Black	4
18	122.070014.02	Tube, Fuel Tank Breather, 670 mm	1
19	24.070030.00	Orifice, Breather Tube	1
20	2.06.006	Clamp Ø7 x Ø1	1
21	62405.201076	Frame Assembly, See Figure H	1
22	2.05.001	Clamp Ø8 x 6.5	2
23	1.62.06	Butterfly Type Nut M6	1
24	1.93.06.2	Lock Washer Ø6	1
25	1.97.1.06.2	Washer Ø6	2
26	1.6177.1.06	Lock Nut M6, Flange	1
27	5.1900.029	Grounding Line 150 mm	1
28	1.862.06	Lock Washer Ø6, Toothed	1
29	152.070012.13	Hose, LPG, 200 mm	1

#	Part Number	Description	Qty.
30	2.06.032	Clip Ø17	3
31	27.136000.02	Pressure-Reducing Valve	1
32	9.1500.005	Cover, LPG Connector	1
33	2.06.023	Clip Ø20	1
34	152.070012.12	Hose, LPG, 325 mm	1
35	122.070011.14	Tube, Fuel 380+25 mm, Fuel Tank to Fuel Valve	1
36	1.5789.0615.1	Flange Bolt M6 x 15, Black	4
37	1.818.0614.1	Bolt M6 x 14, Black	2
38	201070.21	Control Panel Assembly	1
39	122.070012.12	LPG Hose With Regulator 6.5 ft.	1

ENGINE PARTS DIAGRAM



ENGINE PARTS PART LIST

#	Part Number	Description	Qty.
1	1.16674.0608	Flange Bolt M6 x 8	3
2	27.061100.01.2	Cover, Recoil Starter, Black	1
3	21.061005.00	Recoil Starter Spring	1
4	2.10.003.1	Rope Ø4 x 1550, Black	1
5	21.061001.01	Reel, Recoil Starter	1
6	45.060003.00	Spring, Ratchet	2
7	45.060002.00	Starter Ratchet, Steel	2
8	45.060009.00	Spring, Ratchet Guide	1
9	45.060007.00	Ratchet Guide	1
10	45.060008.00	Screw, Ratchet Guide	1
11	24.040004.00	Guide Plate, Push Rod	1
12	1.5789.0612	Flange Bolt M6 x 12	8
13	27.080100.07.48	Fan Cover, Yellow	1
14	24.091100.21	Base, Air Cleaner	1
15	21.061006.02	Handle, Recoil, Soft	1
16	24.130004.20	Gasket, Air Cleaner	1
17	27.061000.01	Recoil Assembly	1
18	27.091000.04	Air Cleaner Assembly	1
19	27.131000.00	Carburetor Assembly, See Figure D	1
20	2.03.016	Washer Ø10 x Ø16 x 1.5, Drain Bolt	1
21	2.02.006	Nut M14 x 1.5	1
22	23.060001.01	Pulley, Starter	1
23	27.080001.00	Fan, Engine	1
24	24.120100.11	Flywheel	1
25	2.11.001	Oil Seal Ø25 x Ø41.3 x 6	2
26	2.03.020.1	Washer Ø6.2 x Ø15 x 0.5, Black	2
27	21.110100.00	Gear, Governor	1
28	27.091200.04	Cover, Air Cleaner	1
29	21.110013.00	Shaft, Governor Gear	1
30	21.110011.00	Clip, Governor Gear	1

#	Part Number	Description	Qty.
31	22.130003.00	Gasket, Carburetor	1
32	21.110012.01	Bushing, Governor Gear, Steel	1
33	24.130002.00	Gasket, Insulator	1
34	27.130001.00	Insulator, Carburetor	1
35	23.080600.01	Air Guide, Right Side	1
36	27.030013.00	Seal Strip, Crankcase Cover, Long	1
37	27.030100.01	Crankcase	1
38	21.127000.02	Oil Level Sensor	1
39	27.010000.00	Cylinder Head Assembly, See Figure C	1
40	27.050200.00	Connecting Rod Assembly	1
41	27.050100.00	Crankshaft	1
42	1.276.6205	Bearing 6205	2
43	24.030008.00	Gasket, Crankcase Cover	1
44	22.031000.00.48	Oil Dipstick Assembly, Yellow	1
45	1.5789.0615	Flange Bolt M6 x 15	4
46	27.030007.01	Cover, Crankcase	1
47	1.5789.0832	Flange Bolt M8 x 32	5
48	23.091002.21	Seal, Air Cleaner	1
49	23.110006.00	Rod, Governor	1
50	27.110003.00	Arm, Governor	1
51	1.6177.06	Flange Nut M6	3
52	21.110001.00	Shaft, Governor Arm	1
53	22.123000.05	Ignition Coil	1
54	1.5789.0625	Flange Bolt M6 x 25	4
55	23.110005.01	Spring, Throttle Return	1
56	27.110007.00	Spring, Governor	1
57	2.08.040	Bolt M6 x 21, Governor Arm	1
58	21.110008.00	Pin, Shaft	1
59	27.111000.20	HSNL Control Assembly	1
60	25.040013.00	Lifter, Valve	2

#	Part Number	Description	Qty.
61	2.04.001	Dowel Pin, Ø9 x 14	2
62	27.041000.01	Camshaft	1
63	2.14.012	Woodruff Key, 4 x 7.5 x 19	1
64	2.08.037	Drain Bolt M10 x 1.25 x 25	1
65	27.050005.00	Piston	1
66	23.050003.00	Pin, Piston	1
67	2.09.001	Circlip Ø18 x Ø1	2
68	27.050303.00	Ring, Oil	1
69	27.050302.00	Ring, Second Piston	1
70	27.050301.00	Ring, First Piston	1
71	27.030013.01	Seal Strip, Crankcase Cover, Short	1
72	2.04.003	Dowel Pin Ø10 x 14	2
73	24.040200.00	Rocker Arm Assembly	1
74	2.08.121	Flange Bolt M10 x 65	1
75	27.080200.00	Air Shroud, Cylinder	1
76	2.15.002(F6RTC)	Spark Plug F6RTC	1
77	1.5789.0865	Flange Bolt M8 x 65	3
78	23.091003.21	Element, Air Cleaner	1
79	23.091001.21	Separator, Air Cleaner	1
80	2.03.021.1	Washer Ø6.4 x Ø13 x 1, Black	1
81	1.5789.0840	Flange Bolt M8 x 40	1
82	21.040008.00	Rotator, Exhaust Valve	1
83	24.040202.00	Shaft, Rocker Arm	1
84	22.040009.00	Rocker Arm	2
85	22.040012.00	Screw, Valve Adjustment	2
86	21.040021.00	Nut M6 x 0.5, Lock	2
87	1.97.1.06	Washer Ø6	2
88	1.6177.1.06	Flange Lock Nut M6	2
89	27.131001.13	Choke Lever	1
90	24.040201.00	Retainer, Rocker Arm	1
91	2.08.166	Flange Bolt M5x12	4
92	27.040005.00	Push Rod	2

#	Part Number	Description	Qty.
93	21.020002.01	Gasket, Cylinder Head Cover	1
94	24.021000.00	Cover, Cylinder Head	1
95	23.020001.02	Tube, Breather, 112+35	1
96	21.061301.01.48	Insert, Handle, Recoil	1
97	45.121000.00	Coil, Charging	1
98	23.030006.00	Plate, Coil	1
99	1.5789.0608	Flange Bolt M6 x 8	1

CYLINDER PART DIAGRAM

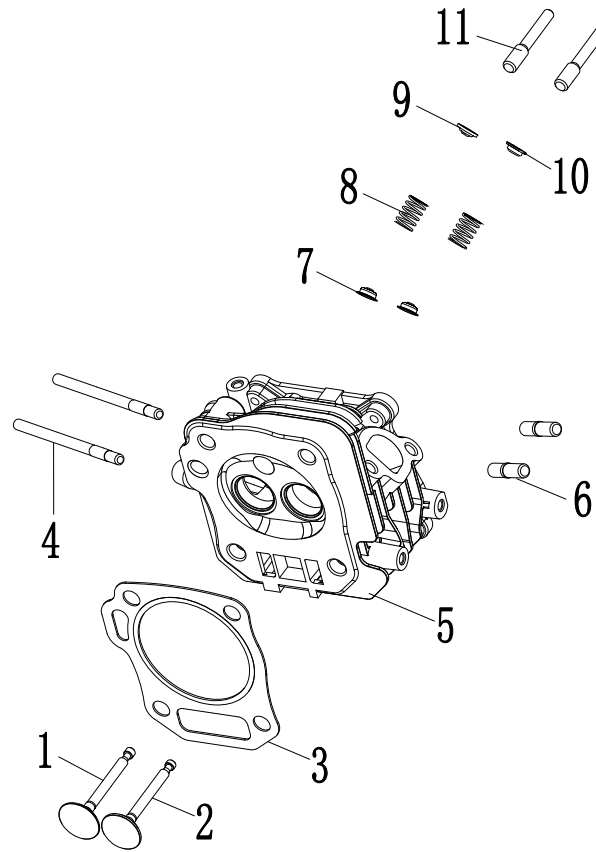


Figure C

CYLINDER PART LIST

#	Part Number	Description	Qty.
1	23.040002.02	Valve, Intake	1
2	27.040006.00	Valve, Exhaust	1
3	27.030009.01	Gasket, Cylinder Head	1
4	2.01.003	Stud Bolt M6 x 90	2
5	26.010100.01	Cylinder Head, 224cc	1
6	2.01.010	Stud Bolt M8 x 35	2
7	23.040017.00	Oil Seal, Valve, Steel	2
8	21.040003.00	Spring, Valve	2
9	21.040001.00	Retainer, Intake Valve Spring	1
10	21.040007.00	Retainer, Exhaust Valve Spring	1
11	23.040010.00	Bolt, Rocker Arm	2

ALTERNATOR PART DIAGRAM

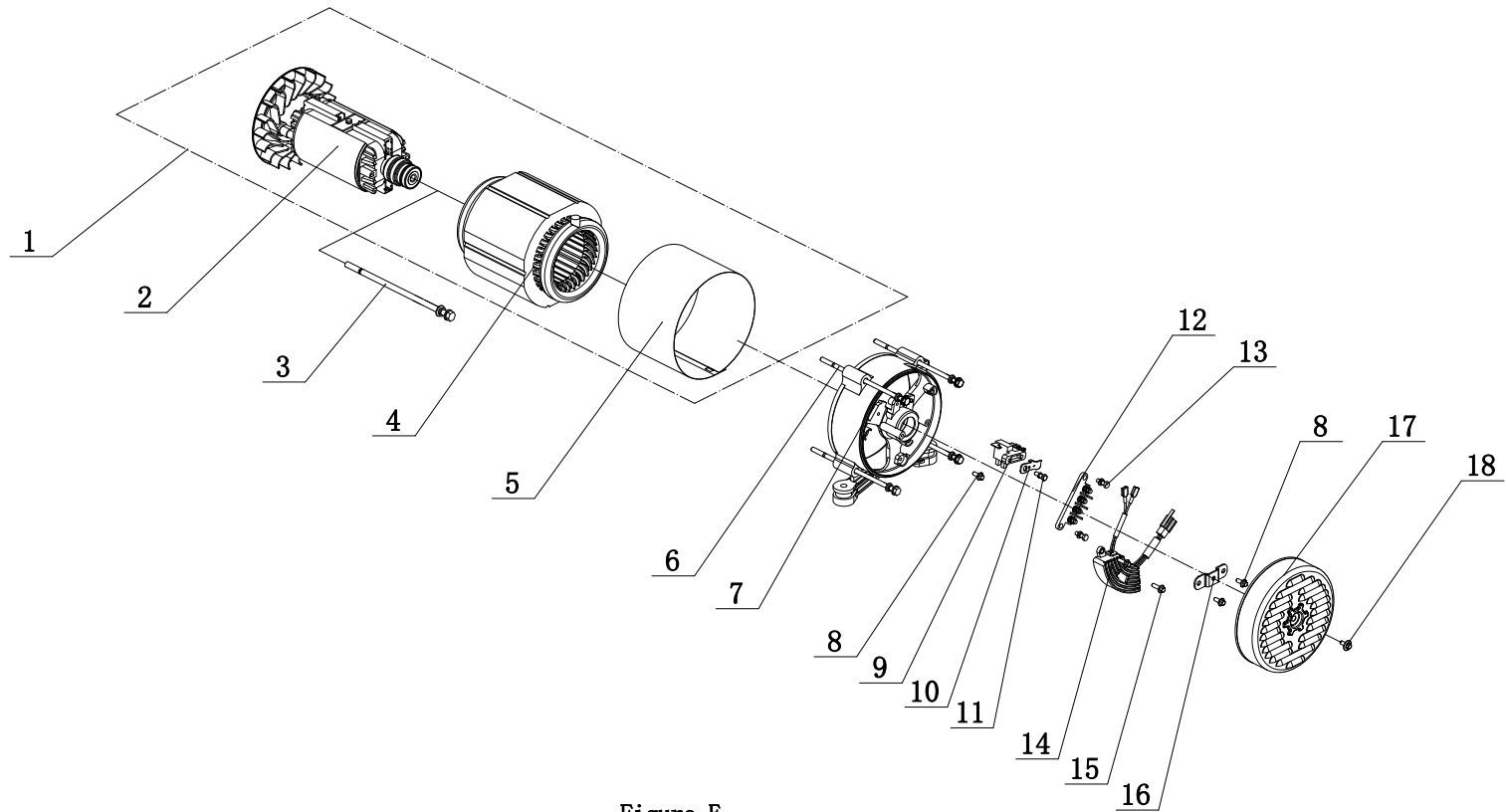


Figure E

ALTERNATOR PART LIST

#	Part Number	Description	Qty.
1	124.191200.23	Alternator Assembly, Al, Ø160 x 130 mm, CSA	1
2	124.191100.02	Rotor Assembly, Al, Ø160 x 130 mm, CSA	1
3	2.08.109	Flange Bolt/Washer Assembly M8 x 252	1
4	124.191200.06	Stator Assembly, Al, Ø160 x 130 mm, CSA	1
5	124.191002.01	Stator Cover	1
6	2.08.032	Flange Bolt/Washer Assembly M6 x 179	4
7	122.190002.00	End Housing	1
8	1.16674.0512.2	Flange Bolt M5 x 12	3
9	122.190300.00	Carbon Brush Assembly	1
10	122.190004.01	Bracket, Carbon Brush Holding	1
11	1.9074.15.0520	Bolt/Washer Assembly M5 x 20	1
12	122.190400.02	Terminal Block	1
13	1.9074.17.0516	Screw/Washer Assembly M5 x 16	2
14	122.190200.03	AVR	1
15	1.16674.0516	Flange Bolt M5 x 16	2
16	122.190018.03	Bracket, End Housing Cover	1
17	122.190003.01.48	Cover, End Housing, Yellow	1
18	2.08.068.1	Flange Bolt M5 x 13, Black	1

FUEL TANK PART DIAGRAM

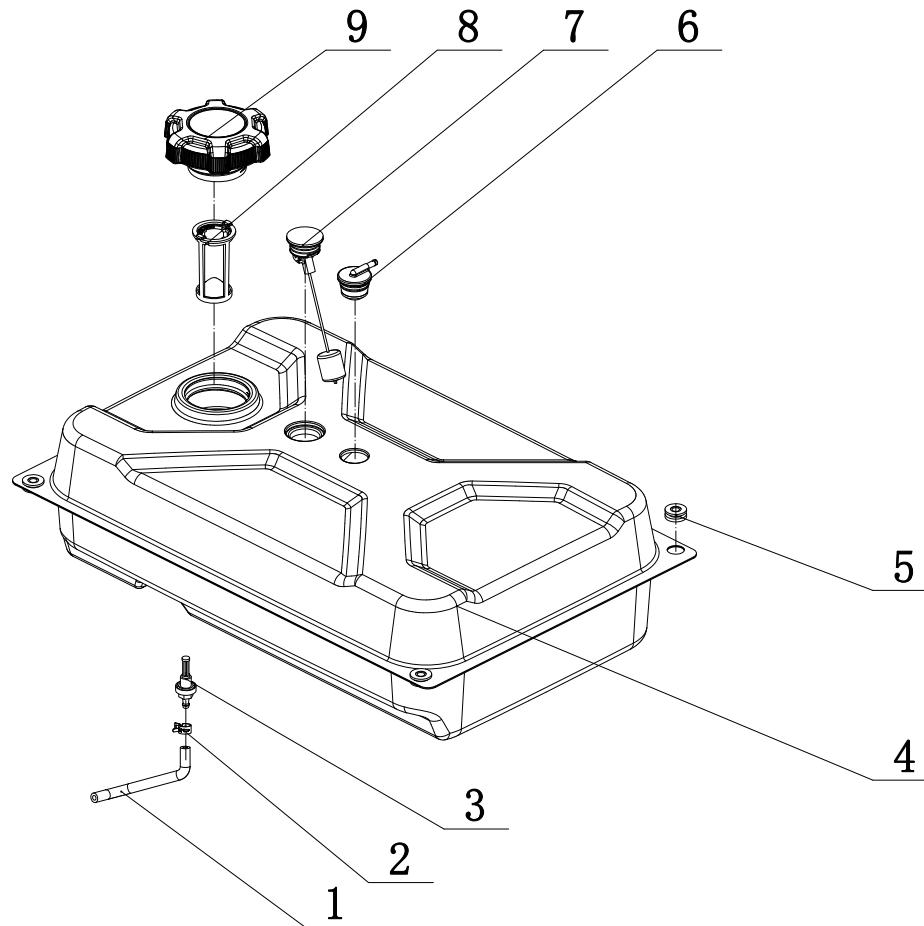


Figure F

FUEL TANK PART LIST

#	Part Number	Description	Qty.
1	122.070011.19	Tube, Fuel, 25+250+25 mm, Fuel Tank to Fuel Valve	1
2	2.06.016	Clamp Ø8.8 x b8	1
3	21.070600.03	Fitting, Fuel Tank	1
4	122.071000.66.48	Fuel Tank, 18L, Yellow	1
5	122.070015.01	Mount Vibration, Fuel Tank	2
6	24.070800.00	Reversal Valve	1
7	122.072000.03	Fuel Gauge	1
8	122.070300.03	Fuel Filter	1
9	122.070100.09	Fuel Tank Cap	1

CONTROL PANEL PART DIAGRAM

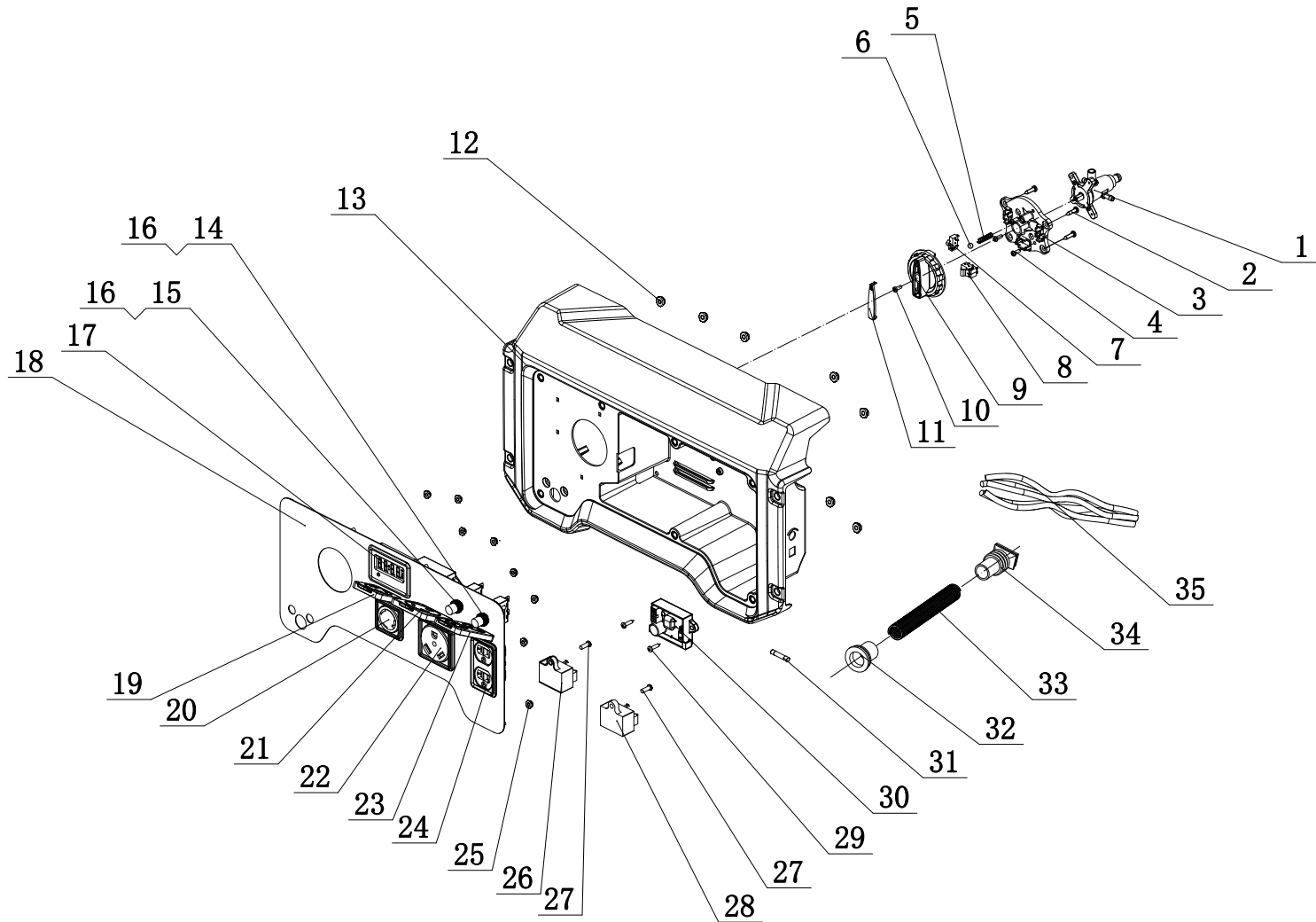


Figure G

CONTROL PANEL PART LIST

#	Part Number	Description	Qty.
1	122.070400.09	Valve, Dual Fuel Select	1
2	1.845.4816	Screw, ST4.8 x 16	4
3	122.139004.02	Plate, Fuel Dial Mounting	1
4	1.818.0414.1	Screw M4 x 14, Black	3
5	62.139007.00	Spring, Steel Ball	1
6	1.308.7	Ball Bearing, Rotary Knob	1
7	5.1050.005	Microswitch, 1-Pole	1
8	5.1050.006	Microswitch, 2-Pole	1
9	122.139001.02	Rotary Knob	1
10	1.9074.4.0414.1	Screw/Washer Assembly M4 x 14, Black	1
11	62.139002.00.48	Cover, Rotary Knob, Yellow	1
12	1.6177.1.05	Lock Nut M5, Flange	7
13	122.210002.64	Control Panel Housing	1
14	5.1210.920	20Amp Circuit Breaker, Push Button, CSA	1
15	5.1210.930	30Amp Circuit Breaker, Push Button, CSA	1
16	5.1870.014	Circuit Breaker Cover, Push Button	2
17	5.1470.000	Intelligauge, INT1AOF	1
18	122.25.5.2	Control Panel	1
19	5.1870.023	Receptacle Cover, Receptacle L5-30R	1
20	5.1120.023	Receptacle L5-30R, CSA	1
21	5.1870.021	Receptacle Cover, Receptacle TT-30R	1
22	5.1120.036	Receptacle TT-30R	1
23	5.1870.025	Receptacle Cover, Receptacle 5-20R	1
24	5.1120.027	Receptacle 5-20R, Duplex, CSA	1
25	1.6177.1.04.1	Lock Nut M4, Flange, Black	8
26	5.1820.004	Charger Module	1
27	1.818.0514.2	Screw M5 x 14	2
28	5.1810.004	Over Voltage Protector, CSA	1
29	1.845.4216	Screw, ST4.2 x 16	2
30	5.1830.022	CO Module	1

#	Part Number	Description	Qty.
31	5.1280.008	Fuse 5A	1
32	122.210003.02	Wire Jacket, Control Box Housing, CSA	1
33	5.1320.012	Sheath, Wire, CSA	1
34	122.210003.04	Plug, End Cover, CSA	1
35	201076.21.10	Wire Harness Assembly	1

FRAME ASSEMBLY PART DIAGRAM

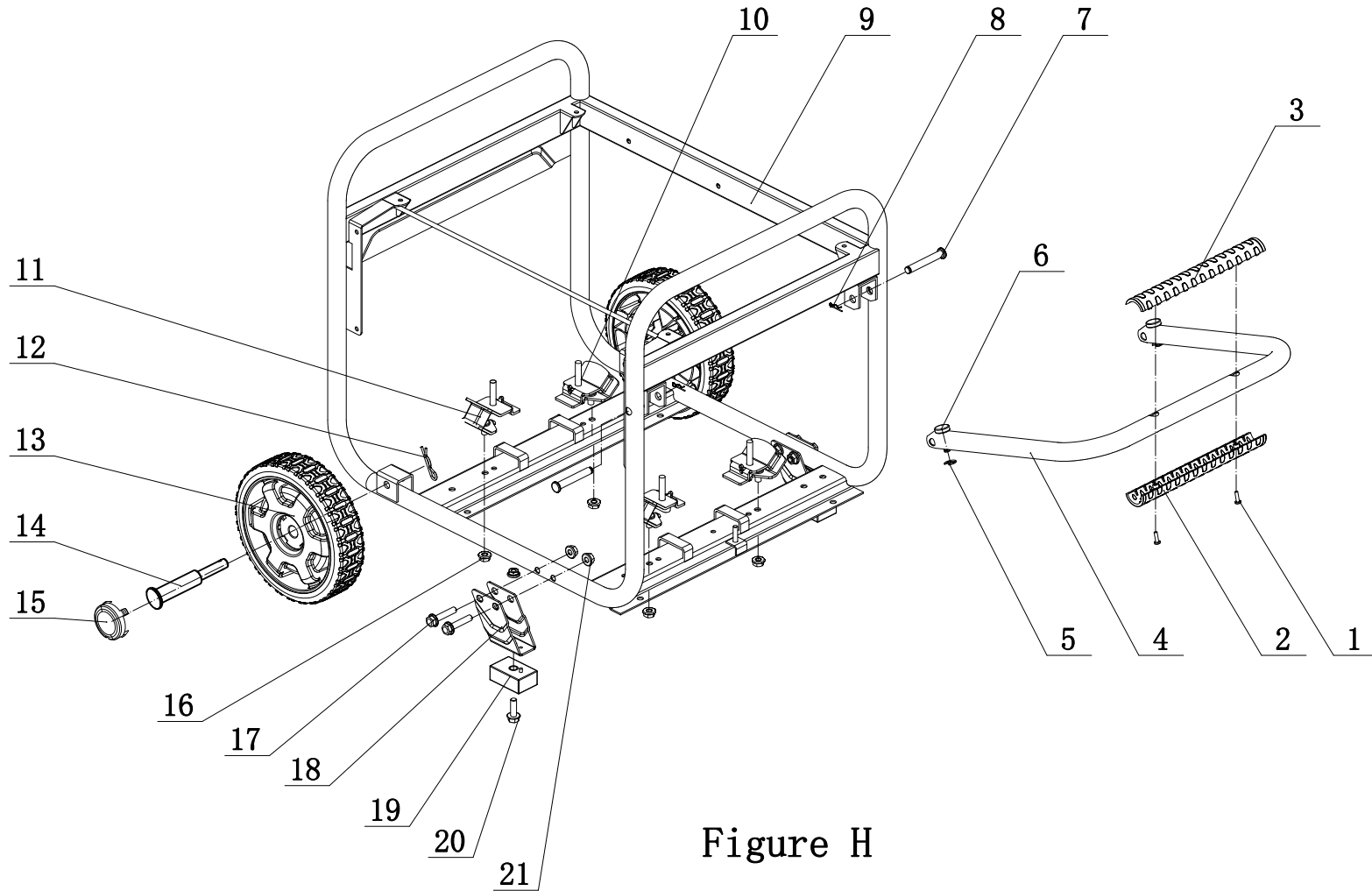
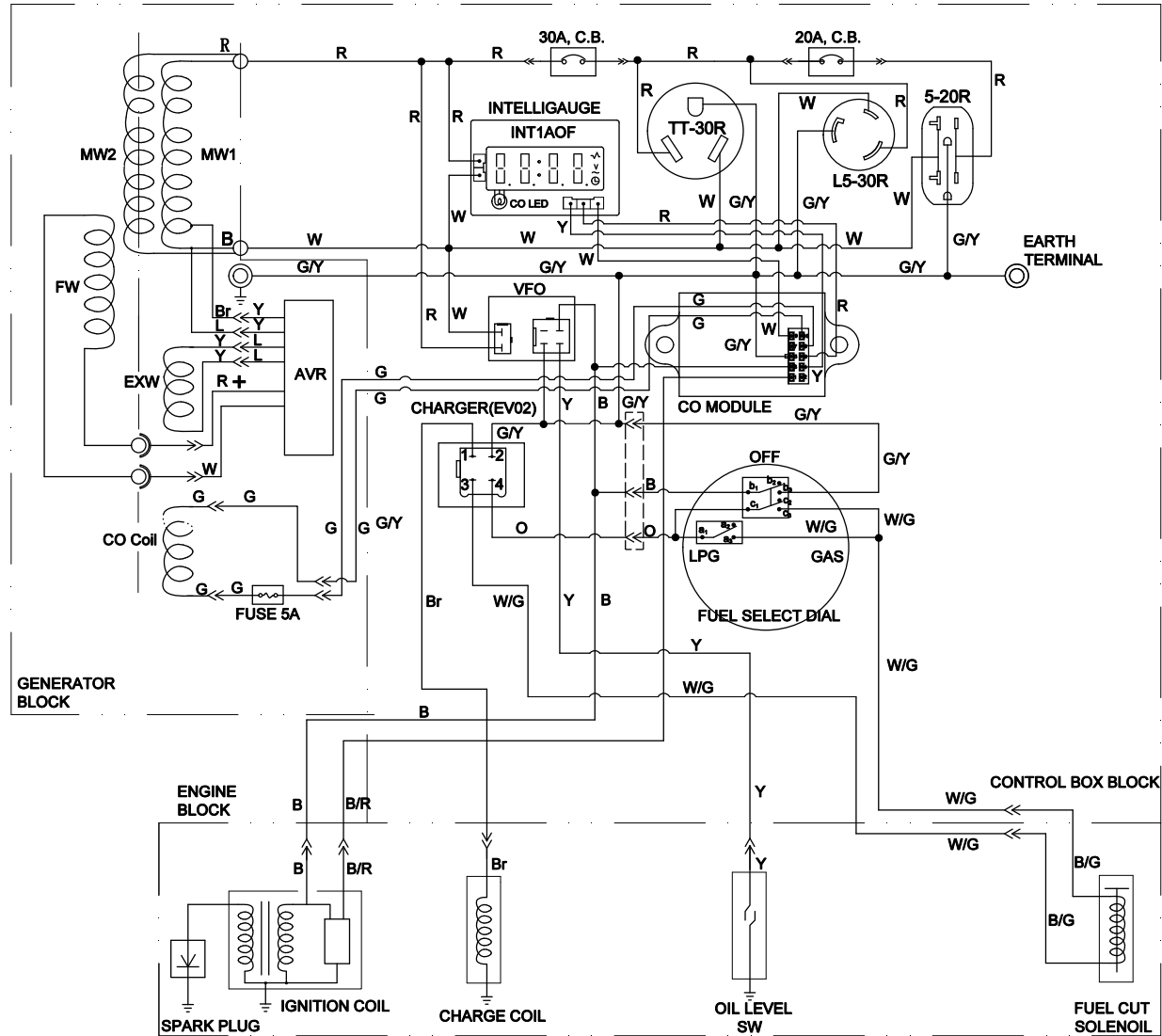


Figure H

FRAME ASSEMBLY PART LIST

#	Part Number	Description	Qty.
1	1.9074.4.0414.1	Screw/Washer Assembly M4 x 14, Black	2
2	122.200702.13	Cover, Handle, Upper	1
3	122.200702.14	Cover, Handle, Lower	1
4	122.200701.13	Handle, U Style	1
5	1.894.1.08	Circlip Ø8	2
6	152.200703.02	Short Pin, Handle	2
7	152.200703.05	Long Pin, Handle	2
8	11.110008.00	"R" Shape	2
9	62405.09.16.2	Frame, 590 x 492 x 502mm	1
10	122.201200.07	Motor Mount 2	2
11	122.201200.06	Motor Mount 1	2
12	2.16.001.1	Pin Ø2 x 33, "R" Shape, Black	2
13	122.201701.11.48	8 in. Wheel, PU, Yellow	2
14	122.201501.23.1	Pin Roll, Wheel, Ø16 x Ø10 x 97, Black	2
15	122.201702.11.48	Wheel Cover, Tooth Profile 8-10 in, Yellow	2
16	1.6177.1.08	Lock Nut M8, Flange	4
17	1.5789.0840.1	Flange Bolt M8 x 40, Black	4
18	152.200002.16.2	Support Leg, 68 mm	2
19	122.201400.04	Rubber, Support	2
20	1.5789.0825.1	Flange Bolt M8 x 25, Black	2
21	1.6177.1.08.1	Lock Nut M8, Flange, Black	6

WIRING DIAGRAM



	a ₂	a ₁	a ₀	b ₂	b ₁	b ₀	c ₂	c ₁	c ₀
GAS	○	○	○	○	○	○	○	○	○
OFF	○	○	○	○	○	○	○	○	○
LPG	○	○	○	○	○	○	○	○	○

B	BLACK	Br	BROWN
Y	YELLOW	B/W	BLACK WHITE
L	BLUE	W/G	WHITE GREEN
G	GREEN	G/Y	GREEN YELLOW
R	RED	W/L	WHITE BLUE
W	WHITE	B/G	BLACK GREEN
O	ORANGE		