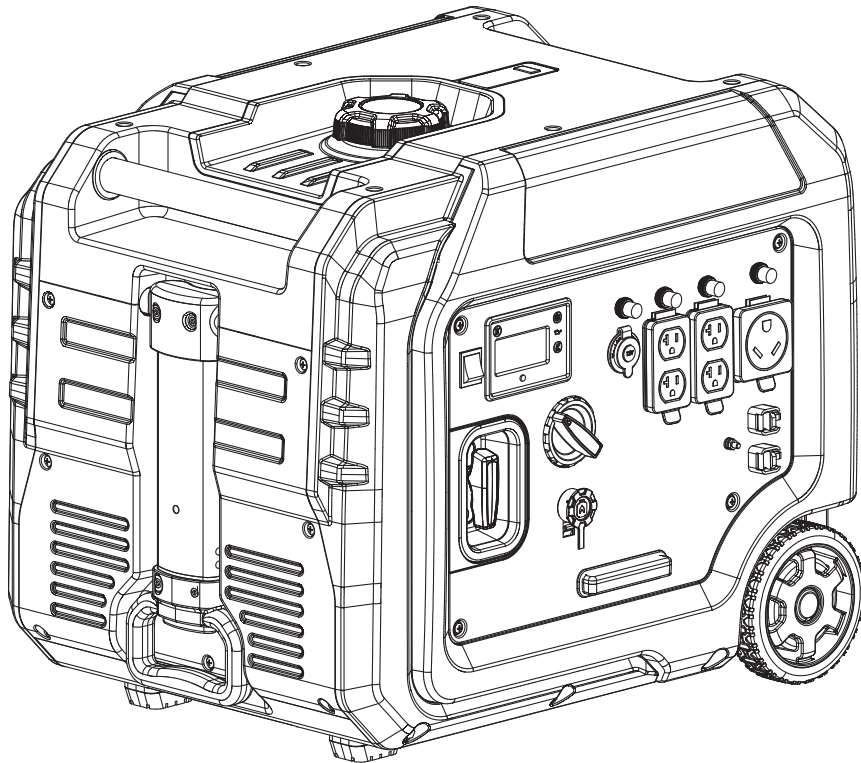




Champion Power Equipment, Inc.

**MODEL #201273**



## **PARTS INFORMATION**

**5500W DUAL FUEL ELECTRIC START INVERTER GENERATOR**

**SERIAL NUMBER RANGE: ALL**



To order replacement parts please visit:  
**[shop.championpowerequipment.com](http://shop.championpowerequipment.com)**  
or call **1-877-338-0999**.

## **TABLE OF CONTENTS**

<b>Inverter Generator Parts Diagram</b> .....	<b>3</b>
<b>Inverter Generator Parts List</b> .....	<b>4</b>
<b>Engine Parts Diagram</b> .....	<b>6</b>
<b>Engine Parts List</b> .....	<b>7</b>
<b>Cylinder Head Parts Diagram</b> .....	<b>9</b>
<b>Cylinder Head Parts List</b> .....	<b>10</b>
<b>Carburetor Parts Diagram</b> .....	<b>11</b>
<b>Carburetor Parts List</b> .....	<b>12</b>
<b>Fuel Tank Parts Diagram</b> .....	<b>13</b>
<b>Fuel Tank Parts List</b> .....	<b>14</b>
<b>Control Panel Parts Diagram</b> .....	<b>15</b>
<b>Control Panel Parts List</b> .....	<b>16</b>
<b>Frame Assembly Parts Diagram</b> .....	<b>17</b>
<b>Frame Assembly Parts List</b> .....	<b>18</b>
<b>Wiring Diagram</b> .....	<b>19</b>

# INVERTER GENERATOR PARTS DIAGRAM

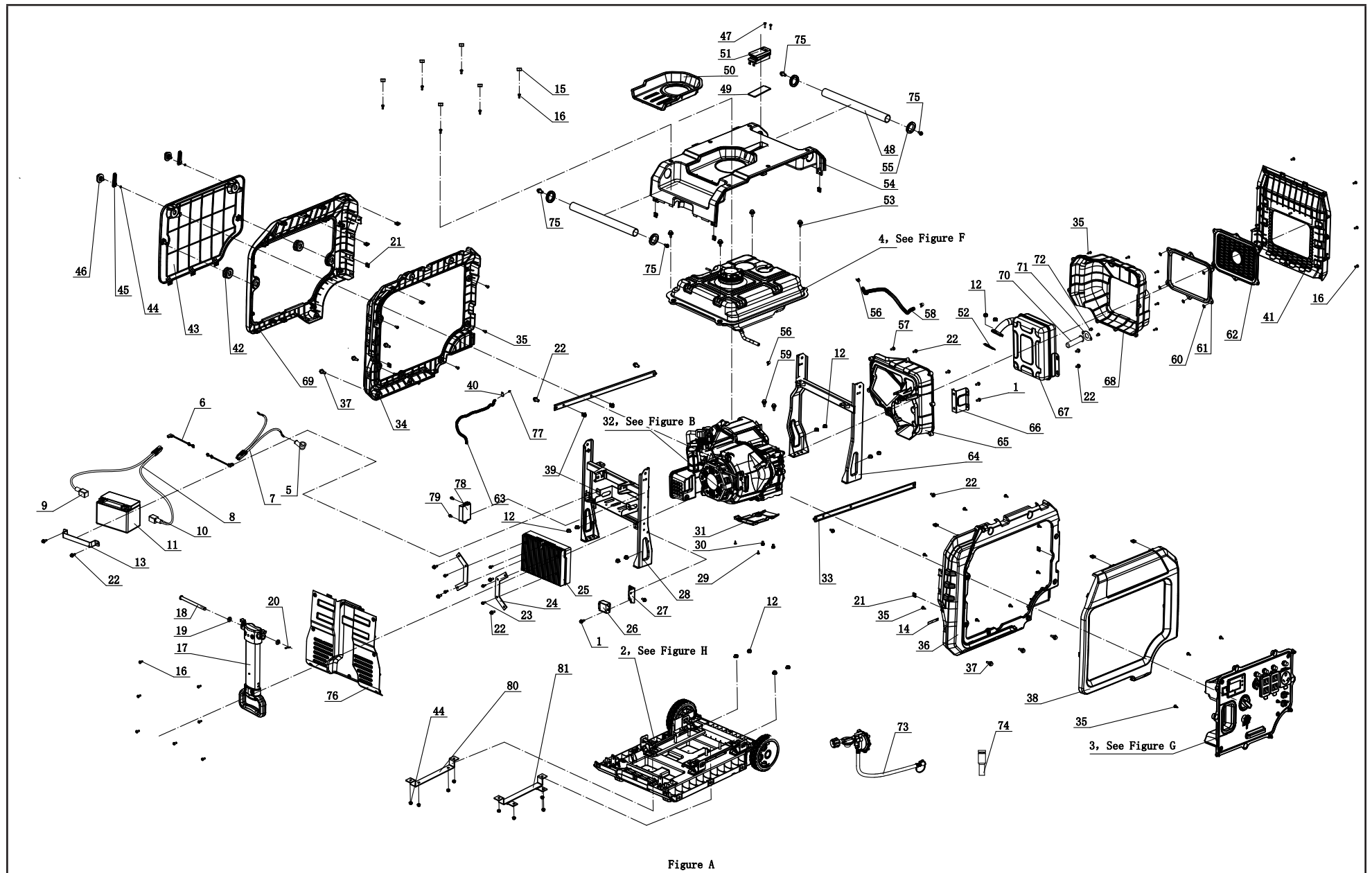


Figure A

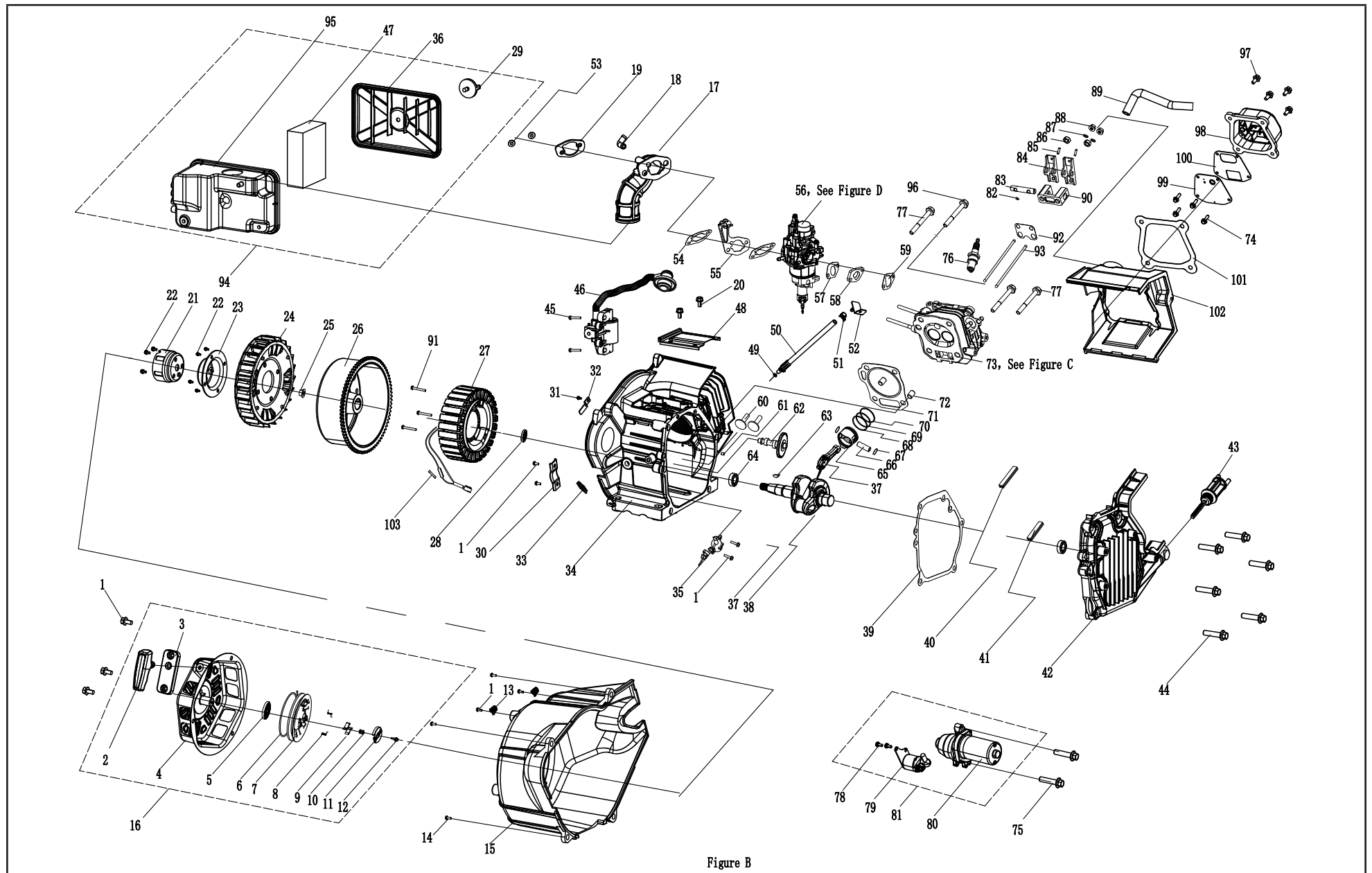
## INVERTER GENERATOR PARTS LIST

#	Part Number	Description	Qty.
1	1.5789.0615	Flange Bolt M6 x 15	3
2	63.200600.00	Base Setting Component Assembly, See Figure H	1
3	63.210000.03	Control Panel Assembly, See Figure G	1
4	63.070000.01	Fuel Tank Assembly, See Figure F	1
5	152.200013.02.3	Sheath, Rubber, Red	1
6	152.200013.03	Sleeve, Connector	2
7	5.1900.139	Motor SAE Wire	1
8	5.1900.137	Battery SAE Wire	1
9	122.200013.04.3	Sheath, Rubber, Red	1
10	122.200013.04	Sheath, Rubber, Black	1
11	9.1000.090	Battery, 9AH	1
12	1.6177.1.08	Lock Nut M8, Flange	14
13	63.200902.00	Pinch	1
14	2.05.050	Clamp, Wire, 100	3
15	63.200503.00	Cover, Connect Port	6
16	1.818.0514.1	Screw M5x14	22
17	63.200700.00	Handle Assembly	1
18	63.200509.00	Handle, Pin	1
19	2.03.073	Bushing	2
20	2.16.006	Cotter Pin (Ø2x20)	1
21	2.02.010	Cage Nut M5	20
22	1.5789.0612	Flange Bolt M6 x 12	16
23	1.5789.0512	Flange Bolt M5 x 12	5
24	63.220004.00	Holder, Control Unit	2
25	63.221000.02	Control Unit, 4.0KW, 120V/60Hz, Wireless Parallel	1
26	5.1800.011	Rectifier	1
27	63.200018.01	Support Arm	1
28	63.201100.01	Supporter, Left	1

#	Part Number	Description	Qty.
29	1.845.3595	Screw, ST3.5 x 9.5	2
30	1.5789.0610	Flange Bolt M6 x 10	2
31	63.080600.01	Protector Assembly, Lower	1
32	63.691	Engine, 224 cc, See Figure B	1
33	63.201600.03	Supporter, Fuel Tank	2
34	63.200401.01	Supporter, Rear Cover, Black	1
35	1.845.4216	Screw, ST4.2 x 16	29
36	63.200101.01	Supporter, Front Cover, Black	1
37	2.08.075.1	Bolt M6 x 20	6
38	63.200101.00	Front Cover	1
39	2.05.001	Clamp, Ø8 x 6.5	2
40	2.06.006	Clamp, Ø7 x Ø1	1
41	63.200302.00	Cover, Right Side, Black	1
42	63.200103.00	Rubber Sleeve	2
43	63.200402.03	Protector, Rear Cover	1
44	1.6177.1.06	Lock Nut M6, Flange	10
45	63.200410.01	Cover, Rotary Knob	2
46	63.200410.00	Rotary Knob, Protector, Rear Cover	2
47	1.823.0325	Screw M3x25	2
48	63.200700.01	Handle	2
49	63.213004.02	Rubber Pad	1
50	63.200502.00	Spillway, Fuel Tank	1
51	63.214000.00	Indicator Light Assembly, Fuel Tank	1
52	26.100001.00	Gasket, Exhaust	1
53	2.08.179.1	Flange Bolt M6 x 25	4
54	63.200500.00	Cover, Top, Black	1
55	63.200102.00	Rubber Sleeve	4
56	2.06.018	Clamp, Ø10.5 x b8	3
57	2.08.102	Screw M6x13	1
58	63.070011.01	Fuel Pipe, Fuel Valve To Carburetor	1

#	Part Number	Description	Qty.
59	2.08.168	Bolt	2
60	2.03.069	Retaining Ring, M5	6
61	63.200304.00	Rubber Seal, Muffler Cover	1
62	63.200303.00	Muffler Cover	1
63	63.070014.02	Pipe, Fuel Tank To Air Cleaner	1
64	63.201100.02	Supporter, Right	1
65	63.081100.00	Muffler Protector Assembly, Front	1
66	63.101005.00	Supporter, Muffler Assembly	1
67	63.101000.00.2	Muffler Assembly	1
68	63.081200.00	Muffler Protector Assembly, Rear	1
69	63.200401.00	Supporter, Rear Cover, Black	1
70	46.101300.08	Spark Arrester Assembly	1
71	46.101503.08	Plate, Spark Arrester	1
72	1.9074.13.0514	Screw/Washer Assembly M5 x 10	2
73	63.130000.00	LPG Hose With Regulator	1
74	9.1130.000.1	Wrench,10,Black	1
75	1.16674.0812	Flange Bolt M8 x 12	4
76	63.200200.00	Cover, Left	1
77	24.070030.00	Hole, Breather Tube	1
78	5.1830.022	Module,CO Shutdown	1
79	1.16674.0516	Bolt M5 x 16	2
80	63.202400.01	Transportation Support 2	1
81	63.202400.00	Transportation Support 1	1

# ENGINE PARTS DIAGRAM



**ENGINE PARTS LIST**

#	Part Number	Description	Qty.
1	1.5789.0612	Flange Bolt M6 x 12	9
2	62.061300.00	Handle, Recoil, Soft	1
3	63.061200.00	Handle guide plate	1
4	83.061100.01.1	Cover, Recoil Starter, Black	1
5	21.061005.00	Spring, Recoil Starter	1
6	2.10.001.1	Rope Ø4x1570, Black	1
7	21.061001.01	Reel, Recoil Starter	1
8	45.060003.00	Spring, Ratchet	2
9	45.060002.00	Starter Ratchet, Steel	2
10	45.060009.00	Spring Guide, Ratchet	1
11	45.060007.00	Ratchet Guide	1
12	45.060008.00	Screw, Ratchet Guide	1
13	2.05.050	Clamp, Wire, 100	2
14	1.5789.0620	Flange Bolt M6 x 20	4
15	63.080100.01	Fan Cover	1
16	63.061000.00	Recoil Assembly	1
17	63.090004.02	Air Cleaner Tube	1
18	63.090003.00	Joint, Breather Pipe	1
19	63.090005.00	Pinch, Air Cleaner Tube	1
20	1.5789.0610	Flange Bolt M6 x 10	2
21	63.060001.00	Pulley, Starter	1
22	1.16674.0616	Flange Bolt M6 x 16	7
23	182.060002.00	Connecting Base	1
24	63.080001.00	Cooling Fan	1
25	2.02.006	Nut M14 x 1.5	1
26	63.191100.00	Rotor	1
27	63.191200.05	Stator Component	1
28	2.11.001	Oil Seal Ø25 x Ø41.3 x 6	1
29	62.200410.00	Rotary Knob, Protector, Rear Cover	1
30	182.030006.00	Pinch	1

#	Part Number	Description	Qty.
31	1.5789.0608	Flange Bolt M6 x 08	1
32	63.030006.01	Pinch	1
33	63.030032.00	Sheath, Wire	1
34	63.030100.00.1	Crankcase	1
35	21.127000.02	Oil Level Sensor	1
36	63.091200.00	Cover, Air Cleaner	1
37	27.050200.00	Connecting Rod	1
38	27.050100.04	Crankshaft	1
39	24.030008.00	Gasket, Crankcase Cover	1
40	27.030013.00	Seal Strip, Crankcase Cover, Long	1
41	27.030013.01	Seal Strip, Crankcase Cover, Short	1
42	63.030007.00	Cover, Crankcase	1
43	63.031000.00.2	Oil Dipstick Assembly	1
44	1.5789.0832	Flange Bolt M8 x 32	6
45	2.08.182	Flange Bolt M6 x 20	2
46	63.123000.01	Ignition Coil, Silicon Rubber	1
47	63.091003.00	Element, Air Cleaner	1
48	63.080300.00	Air Guide	1
49	2.03.016	Washer Ø10 x Ø16 x 1.5, Drain Bolt	1
50	83.032000.00	Hose, Oil Drain	1
51	2.06.013	Clamp	1
52	45.030200.00	Support	1
53	1.6177.06	Flange Nut M6	2
54	24.130004.20	Gasket, Air Cleaner	2
55	63.130200.01	Support, Choker Rod	1
56	63.130000.01	Carburetor Assembly, See Figure D	1
57	22.130003.00	Gasket, Carburetor	1
58	63.130001.00	Insulator, Carburetor	1
59	24.130002.00	Gasket, Insulator	1
60	25.040013.00	Lifter, Valve	2

#	Part Number	Description	Qty.
61	2.04.001	Dowel Pin Ø9 x 14	2
62	27.041000.01	Camshaft	1
63	2.14.012	Woodruff Key 4 x 7.5 x 19	1
64	1.276.6205.9	Bearing 6205	2
65	27.050005.00	Piston	1
66	23.050003.00	Pin, Piston	1
67	2.09.001	Circlip Ø18 x Ø1	2
68	27.050303.00	Ring, Oil	1
69	27.050302.00	Ring, Second Piston	1
70	27.050301.00	Ring, First Piston	1
71	27.030009.01	Gasket, Cylinder Head	1
72	2.04.003	Dowel Pin Ø10 x 14	2
73	63.010000.00	Cylinder Head Assembly, See Figure C	1
74	1.16674.0512.2	Flange Bolt M5 x 12	4
75	1.5789.0625	Flange Bolt M6 x 25	2
76	2.15.008(F7RTC)	Spark Plug F7RTC	1
77	1.5789.0865	Flange Bolt M8 x 65	3
78	1.823.0512	Screw M5 x 12	2
79	63.125200.01	Relay, Starter	1
80	63.125100.00	Starter Motor	1
81	63.125000.01	Starter Motor Assembly	1
82	21.040008.00	Rotator, Exhaust Valve	1
83	24.040202.00	Shaft, Rocker Arm	1
84	22.040009.00	Rocker Arm	2
85	22.040012.00	Screw, Valve Adjustment	2
86	21.040021.00	Nut M6 x 0.5, Lock	2
87	1.97.1.06	Washer Ø6	2
88	1.6177.1.06	Lock Nut M6, Flange	2
89	23.020001.03	Breather Tube	1
90	24.040201.00	Retainer, Rocker Arm	1
91	1.5789.0655	Flange Bolt M6 x 55	3
92	24.040004.00	Guide Plate, Push Rod	1

#	Part Number	Description	Qty.
93	27.040005.00	Push Rod	2
94	63.091000.00	Air Cleaner Assembly	1
95	63.091100.00	Base, Air Cleaner	1
96	2.08.121	Flange Bolt M10 x 65	1
97	1.5789.0615	Flange Bolt M6 x 15	4
98	85.021101.00	Cover, Cylinder Head	1
99	85.030300.00	Ventilation Chamber Cover Assembly	1
100	85.030022.00	Gasket, Ventilation Chamber Cover	1
101	85.020002.00	Gasket, Cylinder Head Cover	1
102	63.080200.00	Air Shroud, Cylinder	1
103	5.1280.011	Fuse, 15A	1



## CYLINDER HEAD PARTS DIAGRAM

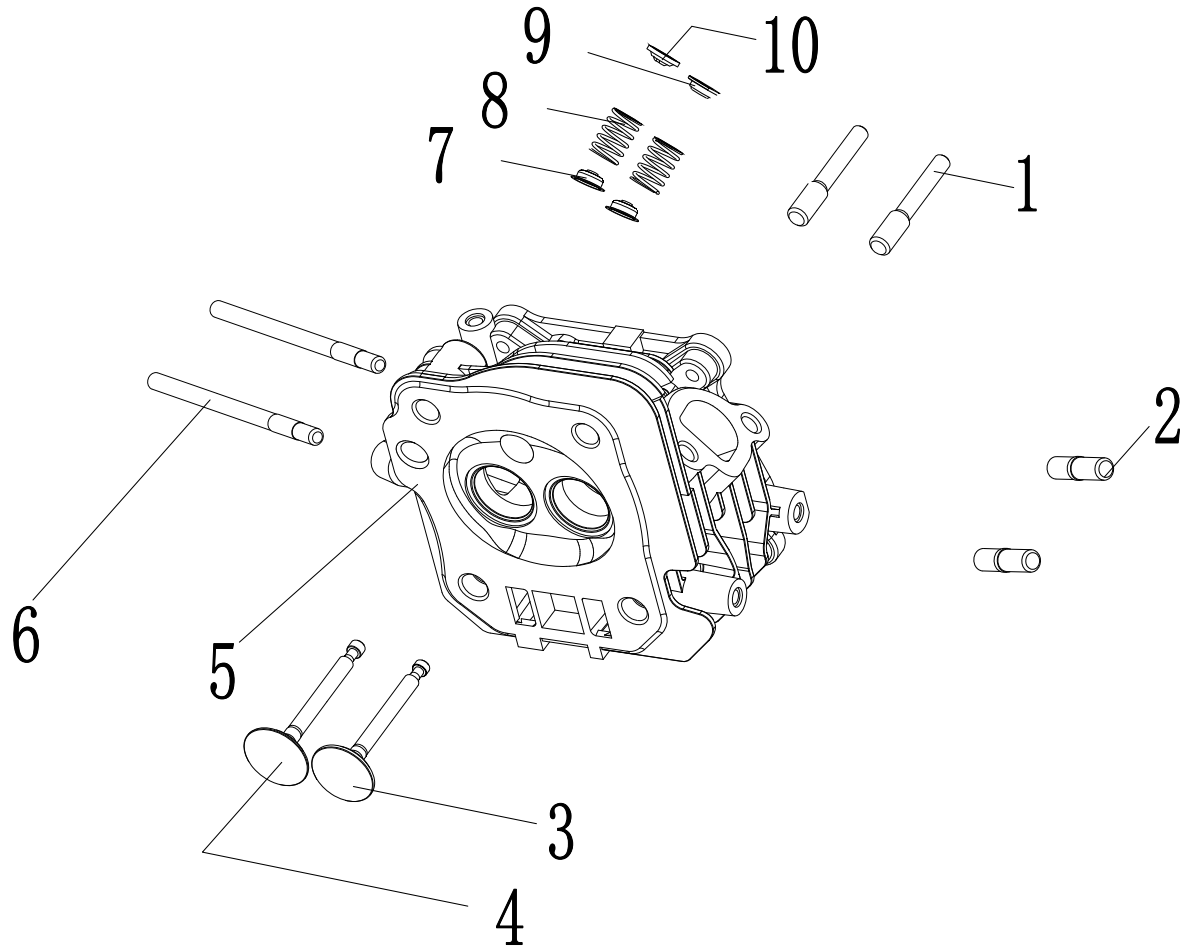


Figure C

**CYLINDER HEAD PARTS LIST**

#	Part Number	Description	Qty.
1	23.040010.00	Bolt, Rocker Arm	2
2	2.01.010	Stud Bolt M8 x 35	2
3	27.040006.00	Valve, Exhaust	1
4	23.040002.02	Valve, Intake	1
5	26.010100.01	Cylinder Head, 224cc	1
6	2.01.049	Stud Bolt M6 x 99	2
7	23.040017.00	Oil Seal, Valve, Steel	2
8	21.040003.00	Spring, Valve	2
9	21.040007.00	Retainer, Exhaust Valve Spring	1
10	21.040001.00	Retainer, Intake Valve Spring	1

## CARBURETOR PARTS DIAGRAM

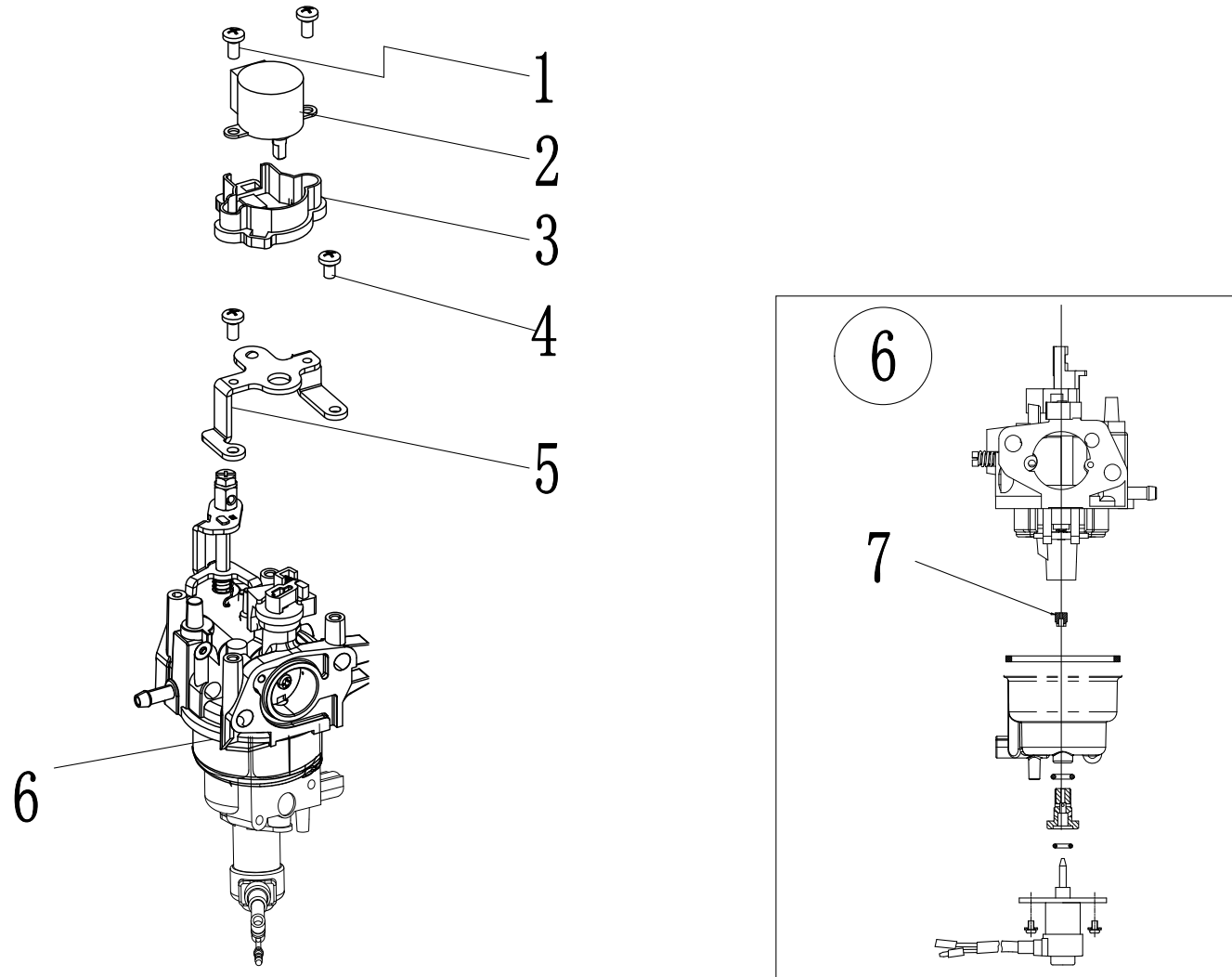


Figure D

**CARBURETOR PARTS LIST**

#	Part Number	Description	Qty.
1	1.823.0408.1	Screw M4 x 8	2
2	62.132200.00	Stepper Motor	1
3	85.132100.04	Support, Stepper Motor	1
4	1.9074.3.0408	Screw M4 x 8	4
5	85.130005.04	Support, Stepper Motor	1
6	63.131000.01	Carburetor	1
7	Contact Support	Standard Main Jet	1
	Contact Support	Altitude Main Jet	/

## FUEL TANK PARTS DIAGRAM

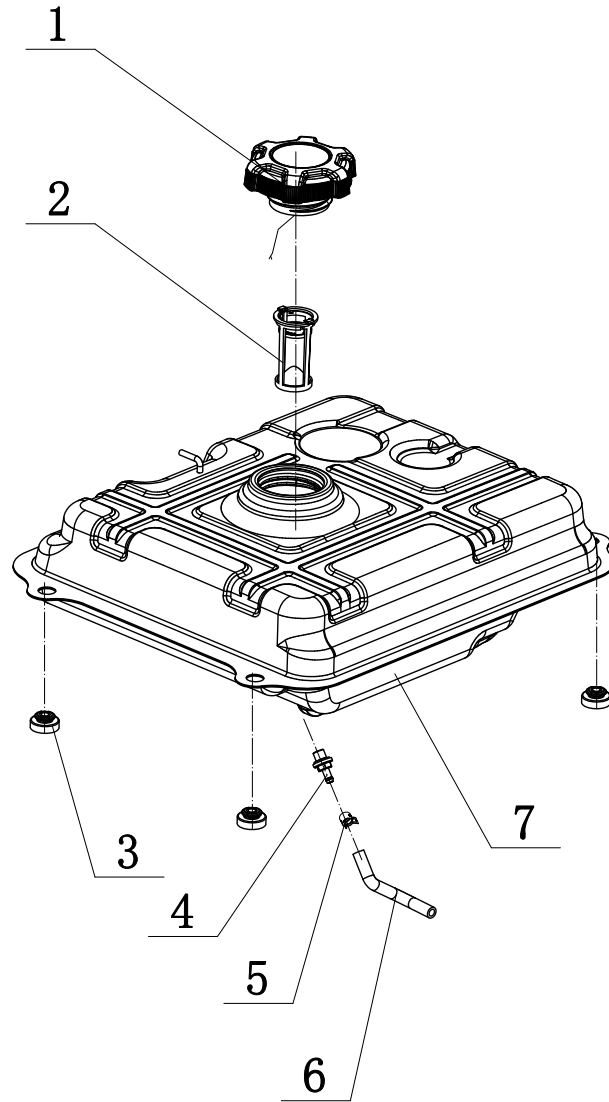


Figure F

**FUEL TANK PARTS LIST**

#	Part Number	Description	Qty.
1	122.070100.09	Fuel Tank Cap	1
2	63.070300.00	Fuel Filter, Fuel Pipe	1
3	63.070015.00	Mount Vibration, Fuel Tank	4
4	63.070600.00	Connect	1
5	2.06.018	Clamp, Ø10.5 x b8	1
6	63.070011.00	Fuel Pipe, Fuel Tank To Fuel Valve	1
7	63.071000.01.1	Fuel Tank	1

# CONTROL PANEL PARTS DIAGRAM

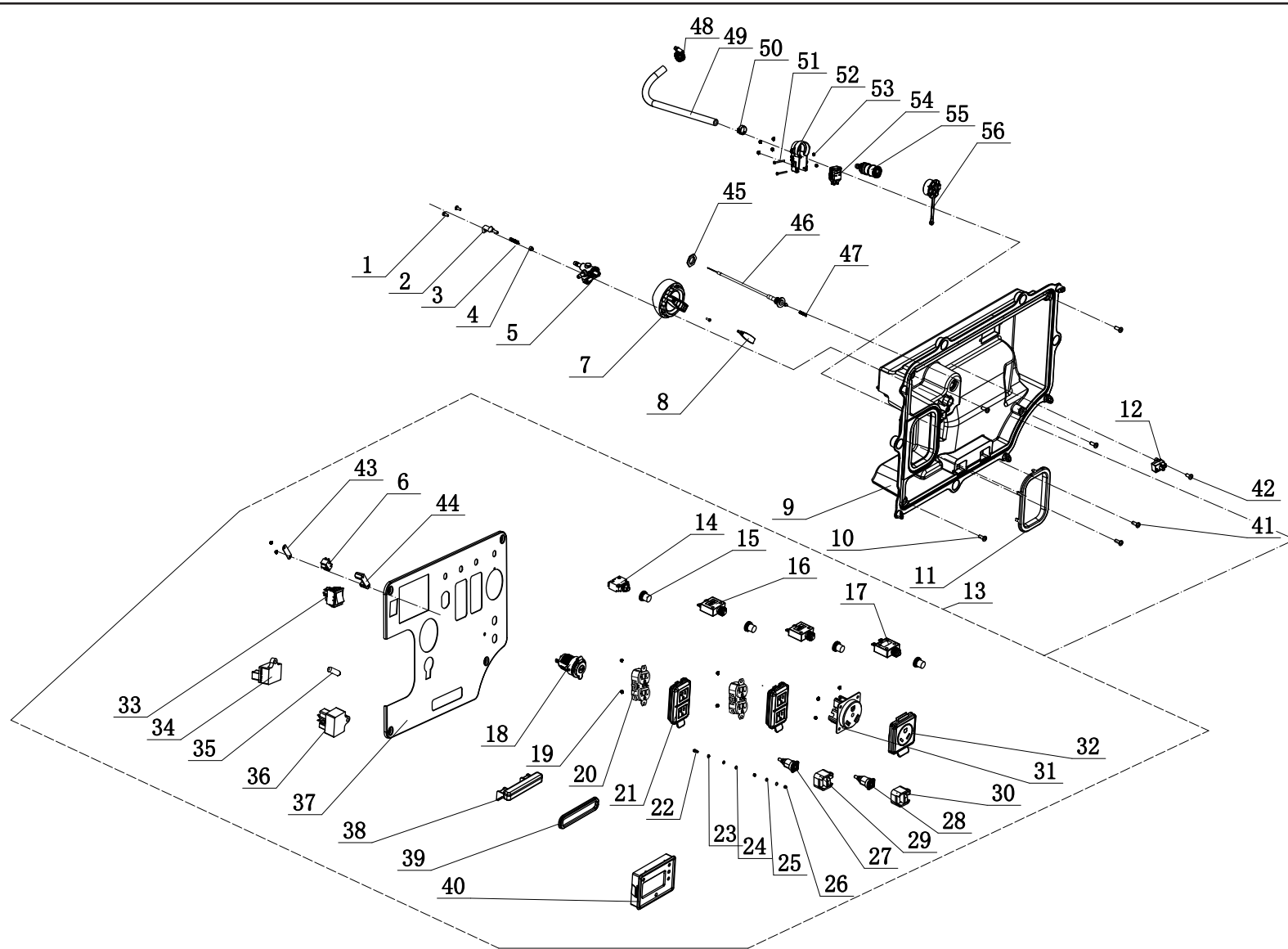


Figure G

**CONTROL PANEL PARTS LIST**

#	Part Number	Description	Qty.
1	1.823.0412.1	Screw M4×12	3
2	62.139006.00	Pressure Plate	1
3	62.139007.00	Spring, Steel Ball	1
4	62.139008.00	Ball Bearing, Rotary Knob	1
5	63.070400.01	Fuel Valve	1
6	5.1050.006	Microswitch	1
7	62.139001.01	Rotary Knob	1
8	62.139002.00.48	Cover, Rotary Knob	1
9	63.210002.03	Control Box, CSA	1
10	1.9074.4.0512.1	Screw/Washer Assembly M5 x 12, Black	4
11	63.200106.00	Protector, Front Cover	1
12	5.1820.012	Charger	1
13	201003.21	Control Panel	1
14	5.1200.908	8 Amp Circuit Breaker, Push Button	1
15	5.1870.014	Circuit Breaker Cover, Push Button	4
16	5.1210.920	20 Amp Circuit Breaker, Push Button	2
17	5.1210.930	30 Amp Circuit Breaker, Push Button	1
18	5.1110.005	Receptacle, DC.12V	1
19	1.6177.1.04.1	Lock Nut M4, Flange	14
20	5.1120.027	Receptacle 5-20R, Duplex, CSA	2
21	5.1870.025	Receptacle Cover, Receptacle 5-20R, Duplex	2
22	1.5783.0520.1	Bolt M5 x 20, Black	1
23	1.862.05	Lock Washer Ø5, Toothed	1
24	1.93.05.1	Lock Washer Ø5, Black	2
25	1.97.1.05.1	Washer Ø5, Black	2
26	1.6170.05.1	Nut M5	2
27	83.210001.01.1	Connect Port, Black	1
28	83.210001.01.3	Connect Port, Red	1
29	5.1870.032	Cover, Connect Port, 125V/25A, Black	1
30	5.1870.032.3	Cover, Connect Port, 125V/25A, Red	1

#	Part Number	Description	Qty.
31	5.1120.036	Receptacle TT-30	1
32	5.1870.021	Receptacle Cover, Receptacle 14-50R	1
33	5.1000.005.3	Switch	1
34	5.1820.009	Charger	1
35	5.1280.003	Fuse, 10A	1
36	5.1830.027	Module, Indicator Light	1
37	63.019.4.48	Control Panel	1
38	63.214000.01	Indicator Light Assembly, Control Panel	1
39	63.213004.00	Indicator Light Assembly Cover	1
40	63.210017.04	Multifunction Display(2N)	1
41	1.818.0514.1	Screw M5×14	2
42	1.845.4216	Screw, ST4.2 x 16	1
43	63.213008.00	Pinch, Microswitch	1
44	63.210016.00	Seat, Microswitch	1
45	2.02.036	Thin Hexnut M16 x 1.5	1
46	63.130200.00	Pull Choke Assembly	1
47	62.130201.00	Spring, Pull Choke	1
48	2.06.023	Hose Clamp Ø20	1
49	63.070012.00	Pipe	1
50	2.06.032	Clamp, Oil Hose	1
51	1.819.1.0330	Sunk Screw M3 × 30	2
52	63.070037.00	Support, Inlet Connection	1
53	1.6170.03	Hexagon Nut M3	2
54	5.1050.000	Microswitch	1
55	63.070021.00	Inlet Connection	1
56	63.200102.01	Circular Rubber Sheath	1



## FRAME ASSEMBLY PARTS DIAGRAM

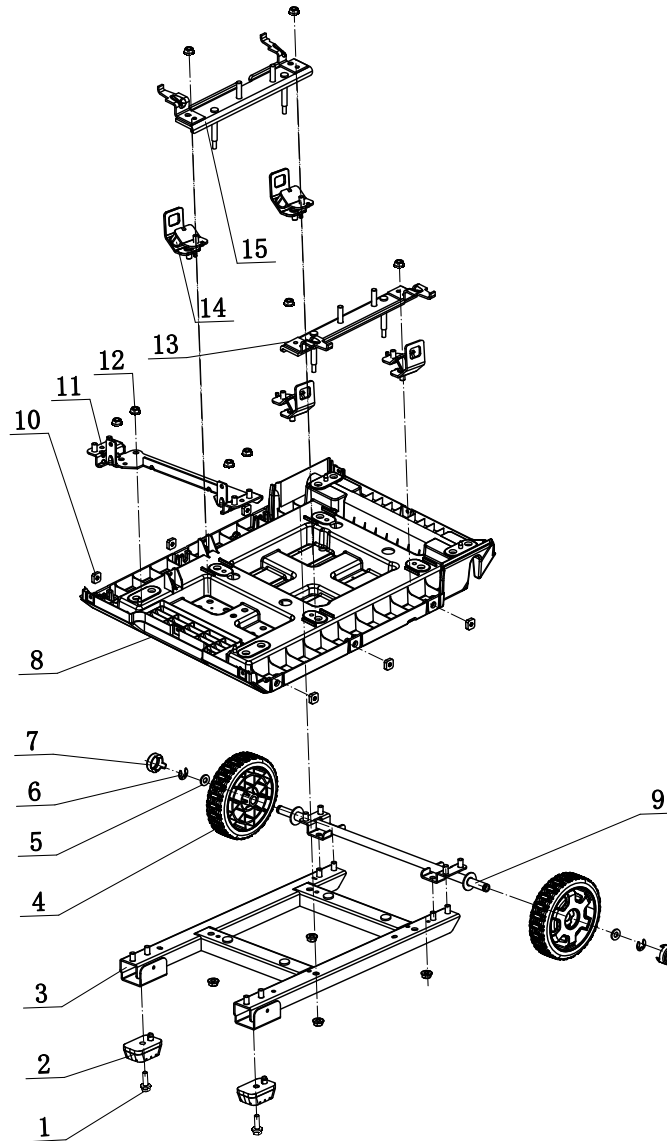


Figure H

**FRAME ASSEMBLY PARTS LIST**

#	Part Number	Description	Qty.
1	1.5789.0615	Flange Bolt M6 x 15	2
2	63.201400.00	Rubber Pad	2
3	63.201100.00	Base Setting Component	1
4	83.201701.03.48	5.5 in. Wheel, Yellow	2
5	1.848.12	Washer Ø12	2
6	1.894.1.12	Retaining Ring, Ø12	2
7	83.201702.03.48	Plug, Wheel, Yellow	2
8	63.200601.00	Base Setting	1
9	63.201500.00	Axle	1
10	2.02.014	Nut M6, Square	6
11	63.201600.02	Supporter	1
12	1.6177.1.08	Lock Nut M8, Flange	12
13	63.201600.00	Supporter, Right	1
14	63.201200.00	Motor Mount	4
15	63.201600.01	Supporter, Left	1

